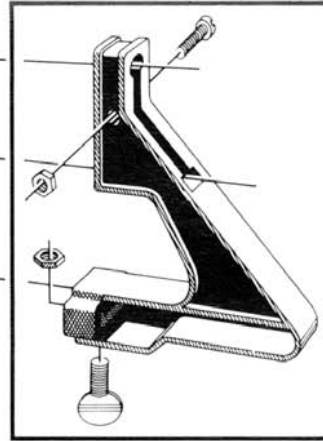
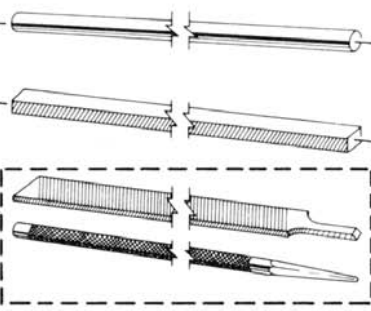
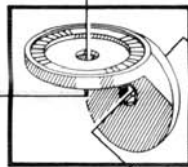
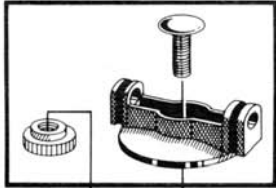


39491

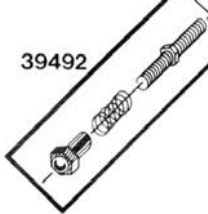


39490

39498



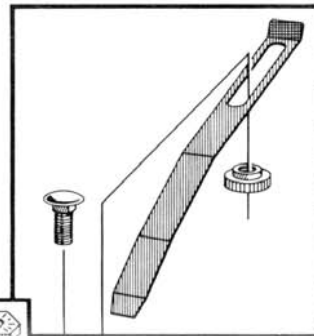
39493



39492

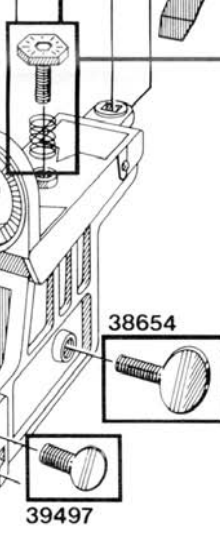


38651



39495

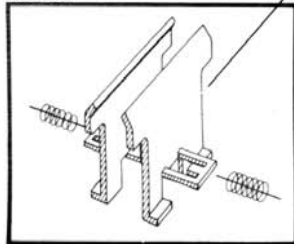
39496

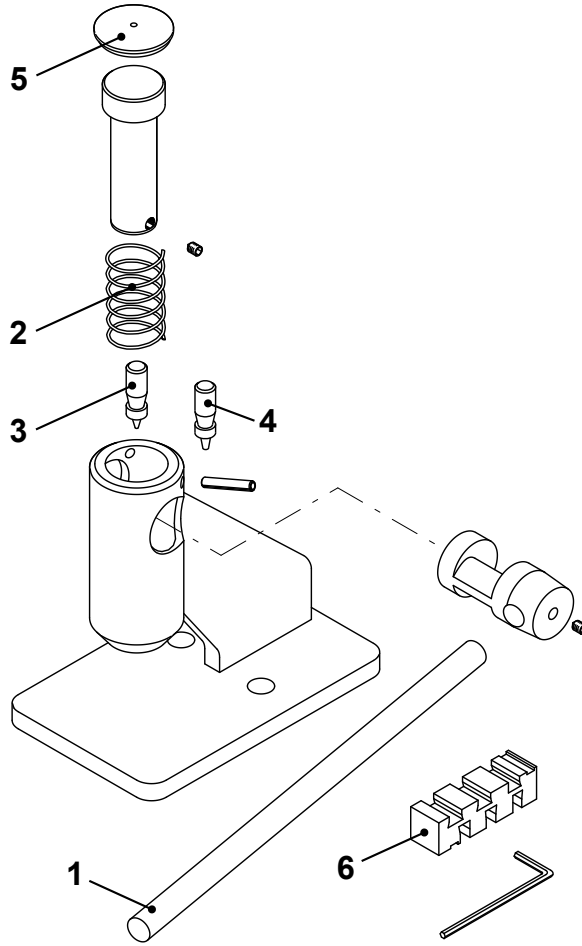


38654

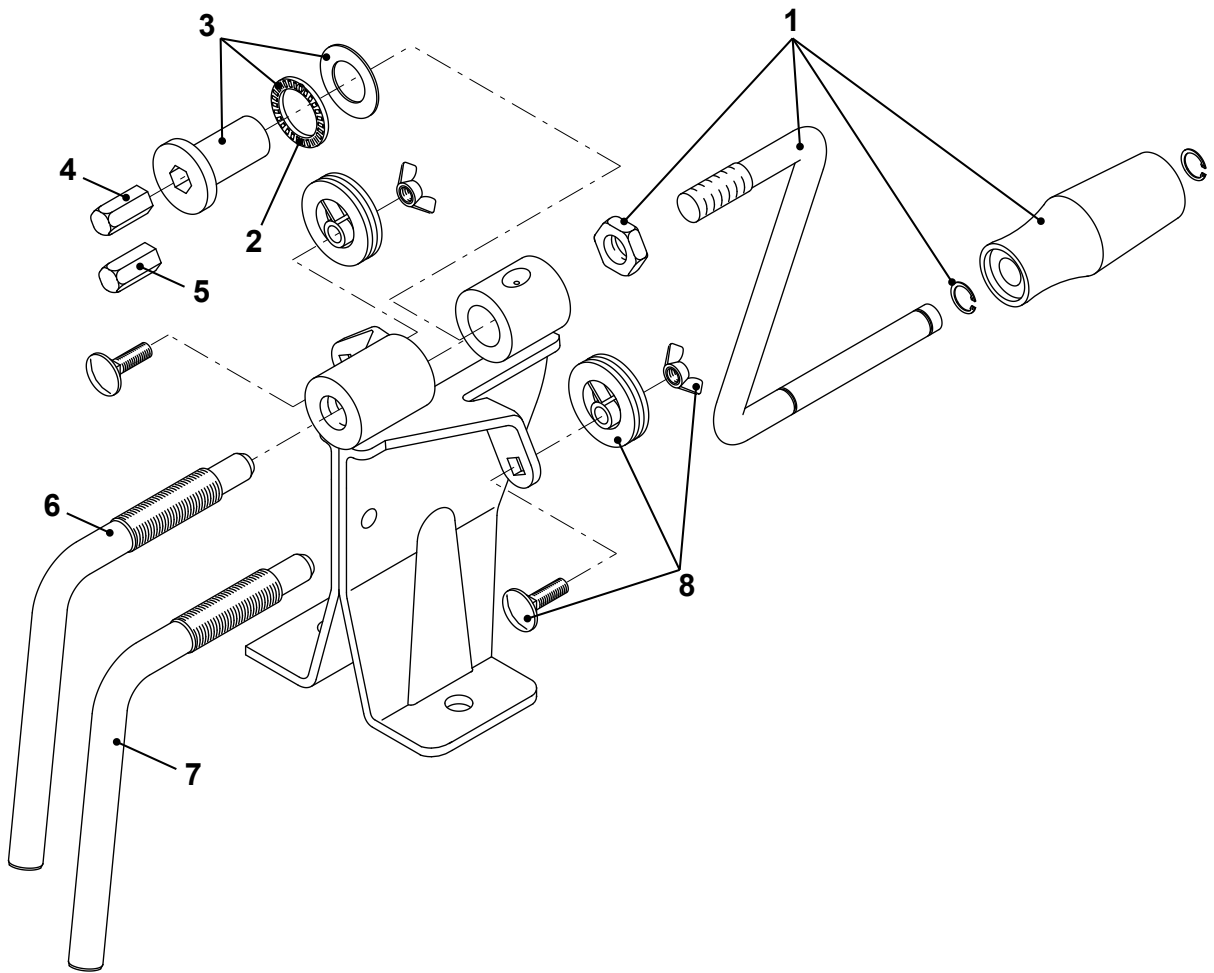
39497

39494

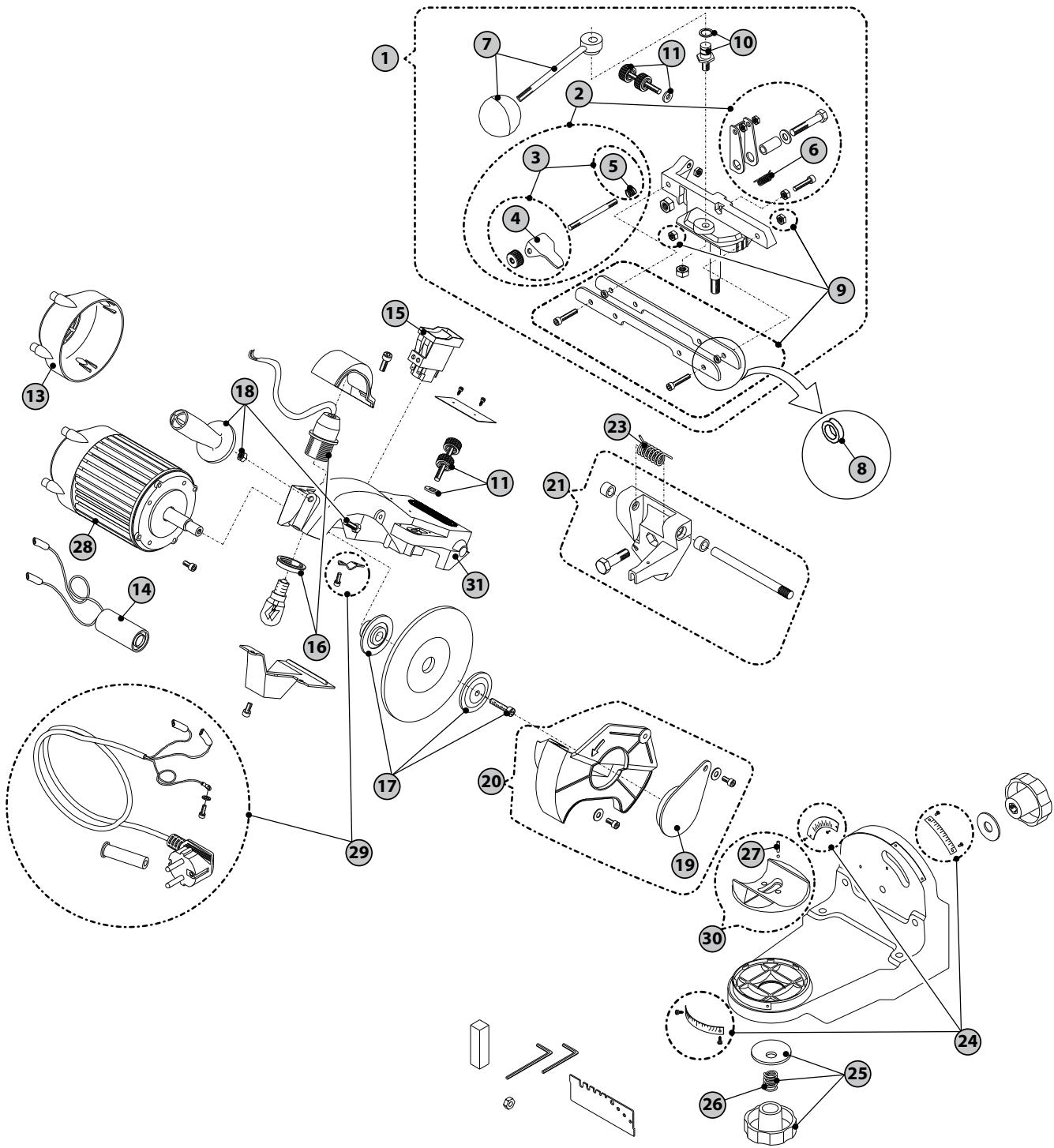




Ref.	P/N	Description	Qty per bag
1	38592	Handle	1
2	38593	Spring	1
3	38594	Standard punch	1
4	109644	Punch .043"	1
5	38595	Cap	1
6	111939	5 slots anvil	1



Ref.	P/N	Description	Qty per bag
1	38601	Spinner handle whit grip	1
2	38605	Thrust bearing	1
3	38604	Sleeve + bearing + washer	1
4	38597	Spinner anvil (A)	1
5	38598	Spinner anvil (B)	1
6	38599	"A" Take-up handle	1
7	38600	"B" Take-up handle	1
8	38603	Chain support disc.+bolt+nut	1

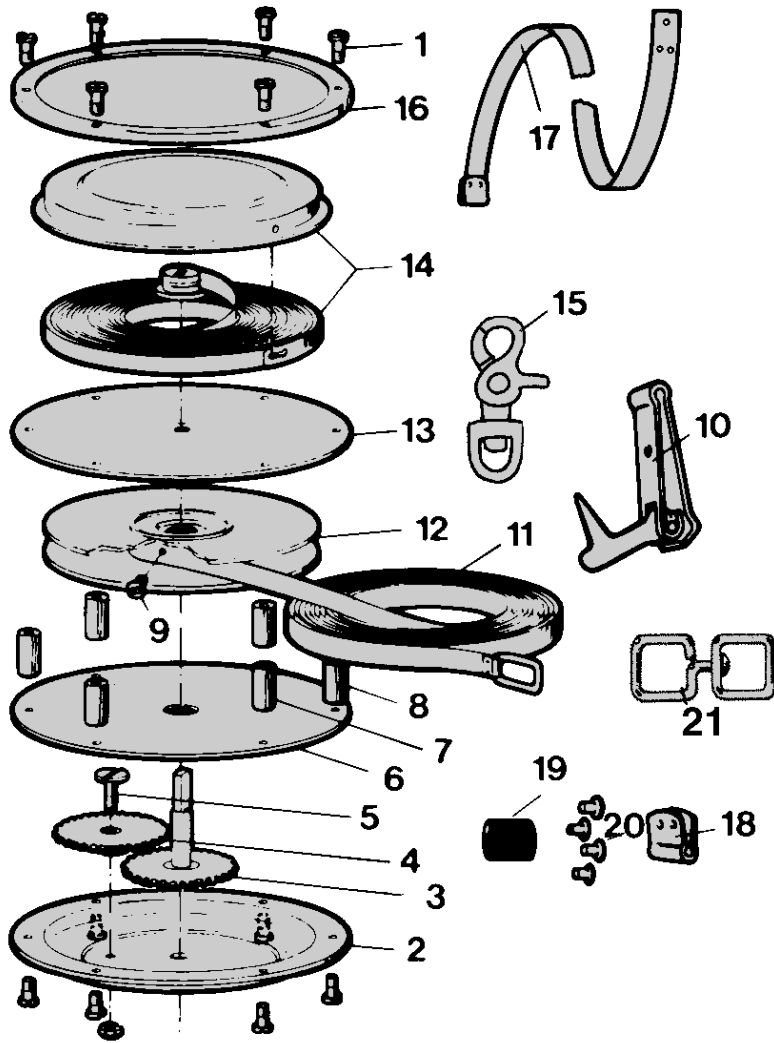




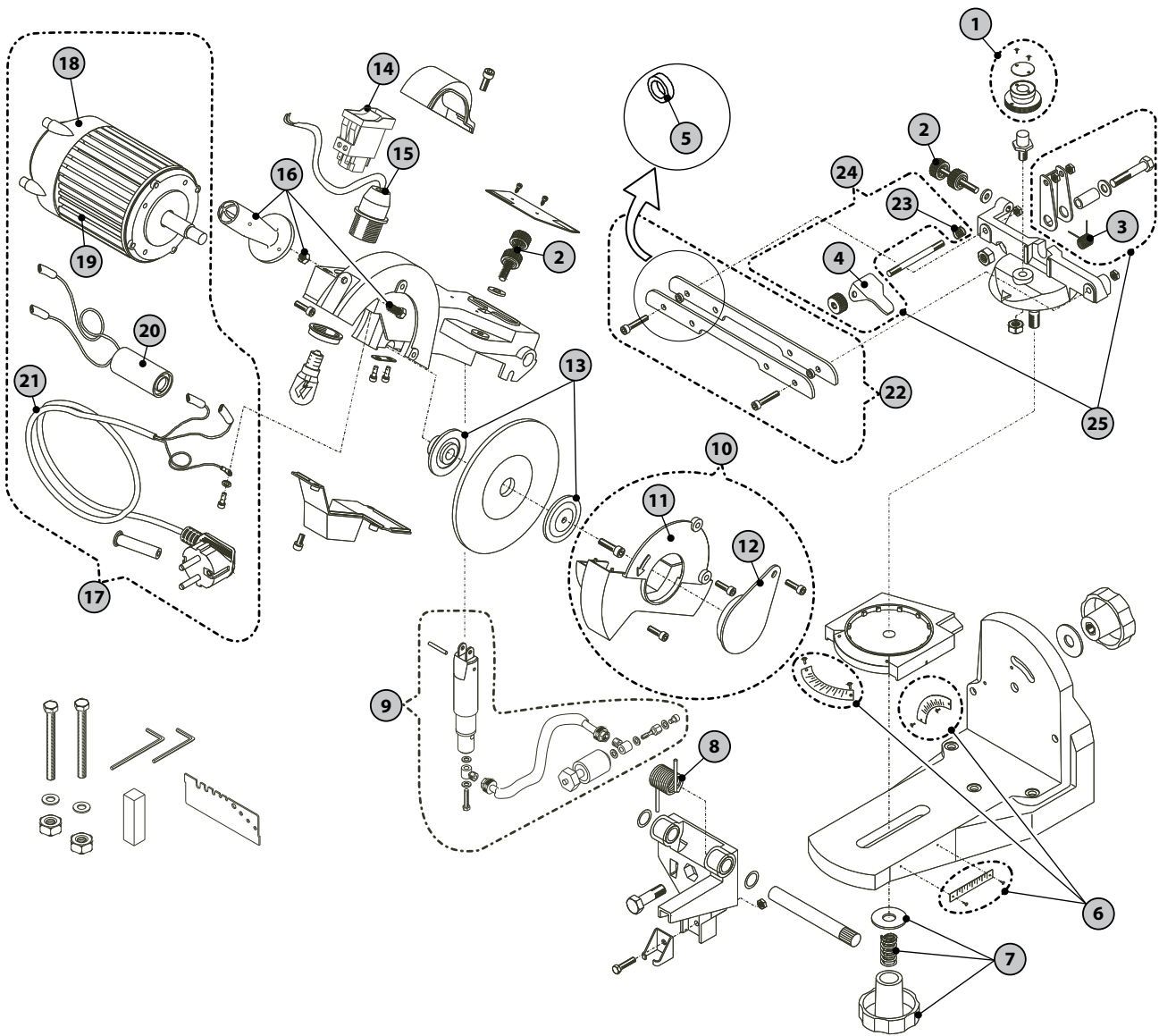
P/N 32653A

Ref.	P/N	Description	Qty per bag
1	110597	Complete vise assembly	1
2	537411	Chain hold kit 511AX	1
3	522688	Chain stop, 511AX vise assy	1
4	32677	Chain stop (5 pk)	5
5	32681	Pawl center spring kit (5 pk)	5
6	35606	Chain stop spring	1
7	534550	Vise handle	1
8	35610	Chain vise spacers	2
9	534549	Vise jaws	1
10	37951	Cam post	1
11	537412	Adjustment knobs, kit	1
13	37947	End motor cap	1
14	295386A	Capacitor 230V	1
15	295387A	Switch 230V	1
16	108505	Light socket E14 w/wires - 230V	1
17	537409	Motor flange kit (outer and inner)	1
18	105538	Handle kit	1
19	105654	Shield kit	1
20	522692	Shield wheel protector	1
21	522649	Bracket, 511AX arm support (from 2008)	1
23	35589	Spring	1
24	537410	511AX scales kit	1
25	537413	Vise locking kit	1
26	35590	Spring	1
27	32678	Spring and ball kit	1
28	295388A	E-Motor 230V	1
29	295389A	Cable kit complete with plug	1
30	104874	Flange and nut	1
31	522650	Arm, 511AX complete	1

P/N 106510
P/N 106511
P/N 106512
P/N 106513



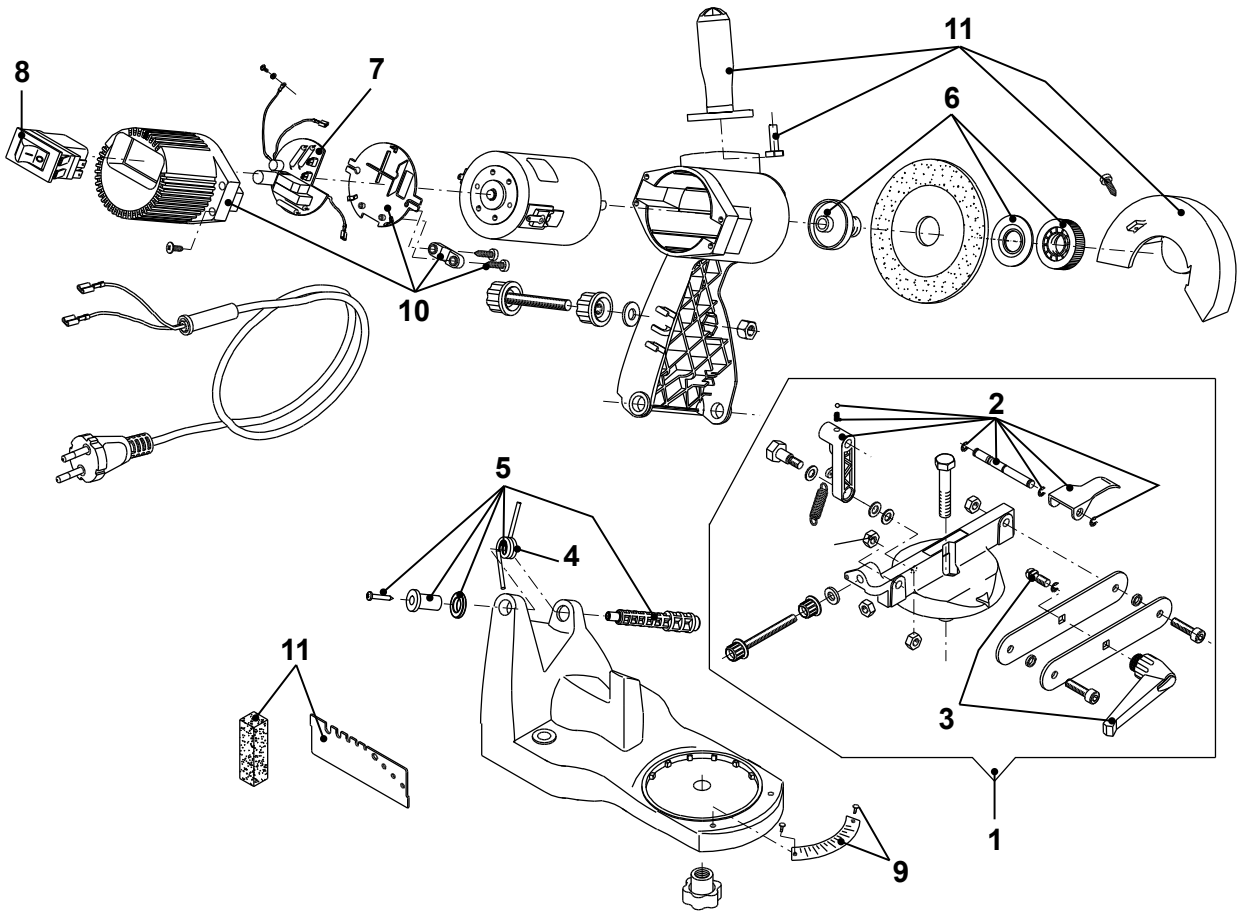
LOGGER'S TAPE PART NUMBER	P/N 106510	P/N 106511	P/N 106512	P/N 106513
Parts description	15m	50'/15m	20m	25m
1. Post screw	106482	106482	106482	106482
2. Gear housing with bearing	106473	106473	106473	106474
3. Main shaft and gear	106477	106477	106477	106477
4. Idler gear and pinion	106478	106478	106478	106478
5. Idler bearing with screw,nut	106479	106479	106479	106479
6. Gear cover plate	106466	106466	106466	106467
7. Nylon guide post with screws	106480	106480	106480	106480
8. Spacer post with 2 screws	106495	106495	106495	106495
9. Tape refill screw	106483	106483	106483	106483
10. Release hook	106492	106492	106492	106492
11. Tape refill blade with release hook	106459	106497	106461	106463
12. Spool with pinion gear	106475	106475	106475	106476
13. Spring cover plate with bearing	106468	106468	106468	106469
14. Spring assembly complete	106515	106515	106515	106516
15. Hanger and swivel clip	106494	106494	106494	106494
16. Locking ring	106464	106464	106464	106465
17. 1/2 metre plastic end	106499	106499	106499	106499
1 metre plastic end	106500	106500	106500	106500
18. Hinge	106484	106484	106484	106484
19. Rubber stop	106486	106486	106486	106486
20. Extra long eyelets (500-pack)	106488	106488	106488	106488
Not illustrated:				
Tape repair end 19" with release hook	106489	106489	106489	106489
25 metre bulk leader tape	106490	106490	106490	106490



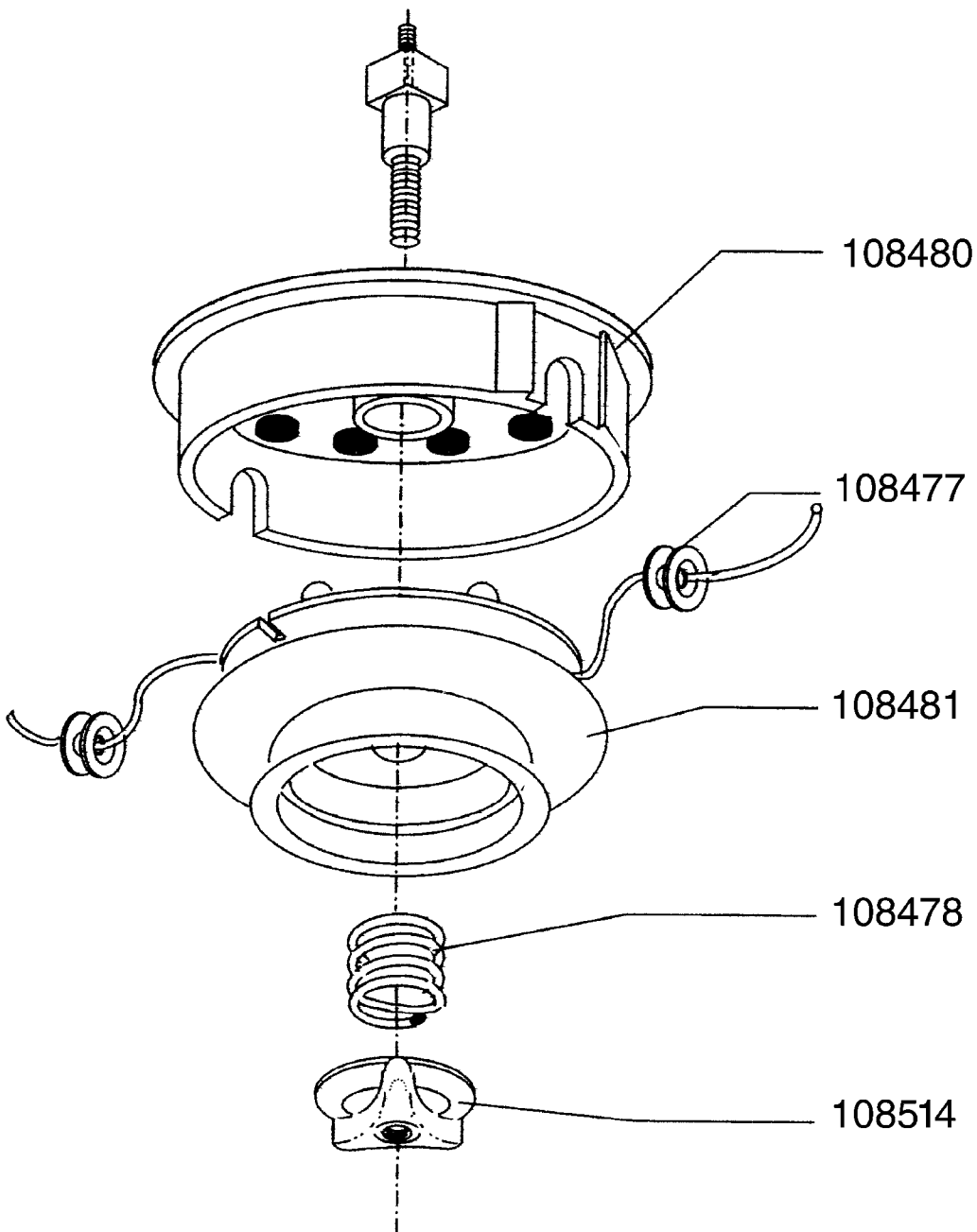


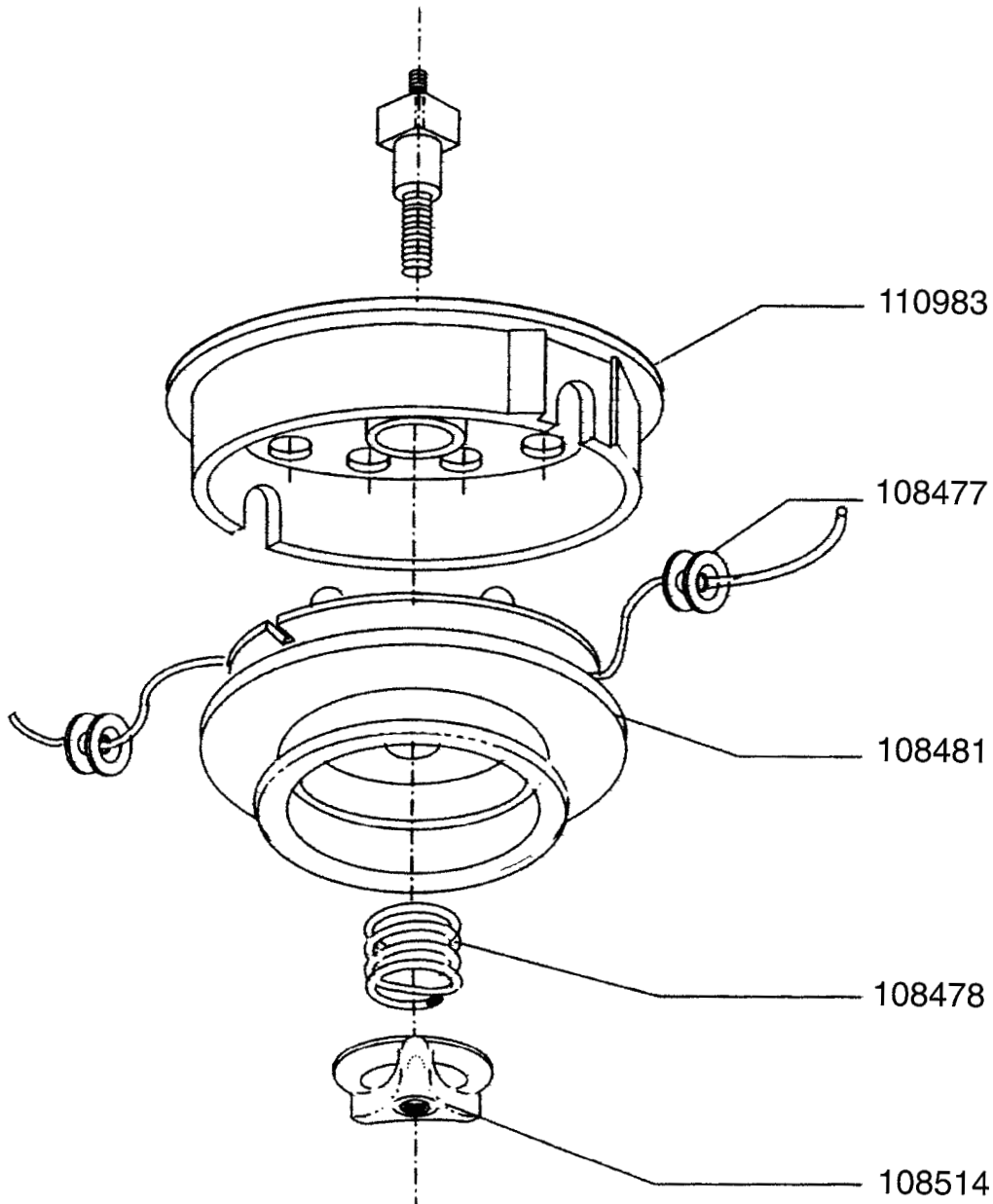
P/N 106540

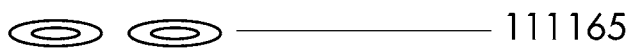
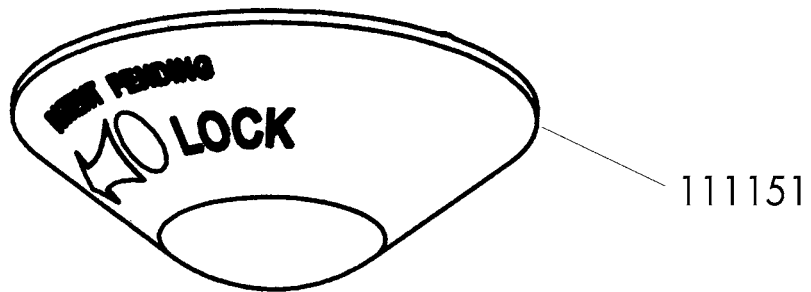
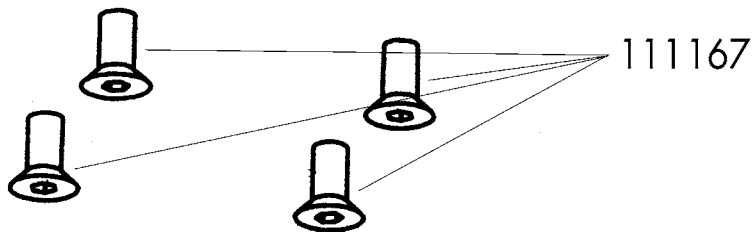
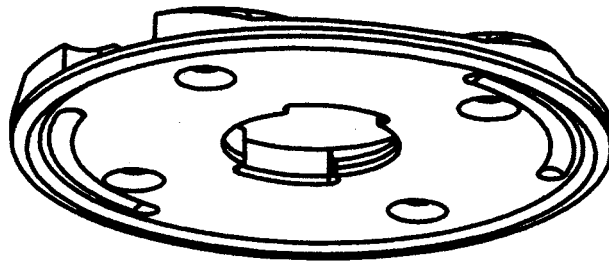
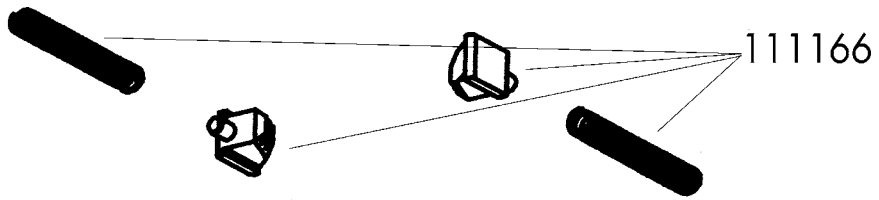
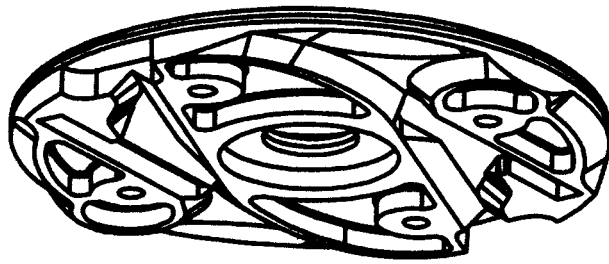
Ref.	P/N	Description	Qty per bag
1	109247	Adj. cam vise position	1
2	537412	Adjustment knobs, kit	1
3	35606	Chain stop spring	1
4	32677	Chain stop (5 pk)	5
5	35610	Chain vise spacers (2 pk)	1
6	537410	Scales kit	1
7	537413	Vise locking kit	1
8	110703	Motor mount arm spring	1
9	108493	Complete hydraulik a.bly	1
10	554651	Shield wheel protector	1
11	109248	Metal shield	1
12	105654	Shield kit	1
13	537409	Motor flange kit (outer and inner)	1
14	295387A	Switch 230V	1
15	108505	Light socket e14 w/wires - 230V	1
16	105538	Handle kit	1
17	546962	Complete electrical a.bly 230V	1
18	37947	End motor cap	1
19	295388A	E-Motor 230V	1
20	295386A	Capacitor 230V	1
21	295389A	Cable kit complete with plug - 230V	1
	111035	Cable kit complete with plug - 230V - AUS	1
22	534549	Vise jaws kit	1
23	32681	Pawl center spring kit (5 pk)	5
24	522688	Chain stop, 511ax vise assy	1
25	537411	Chain hold kit 511AX	1

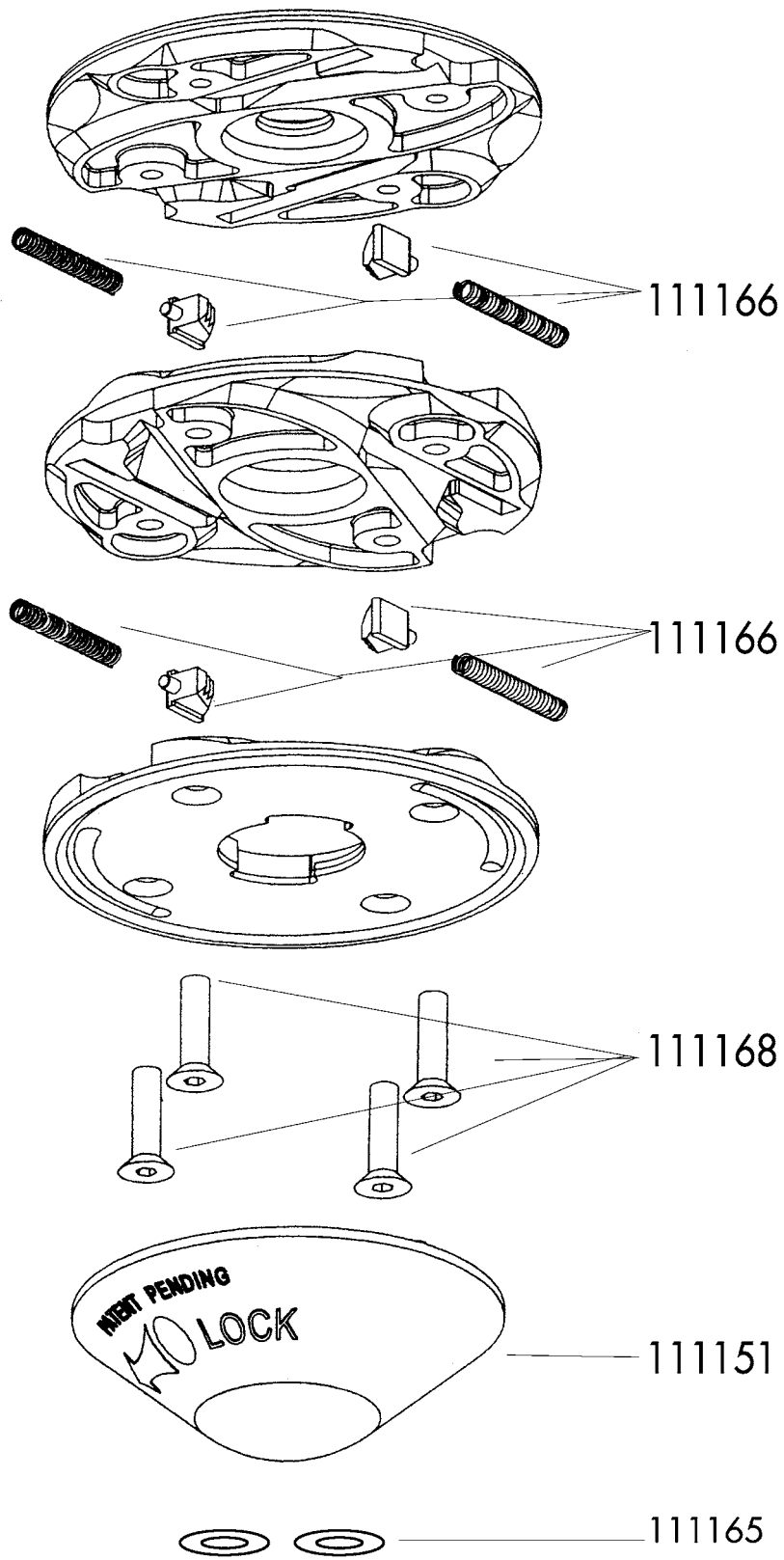


Ref.	P/N	Description	Qty per bag
1	108476	Complete vise	1
2	110579	Chain stop retrofit kit	1
3	109171	Vise position/tension adjustment knob	1
4	109175	Return spring, grind lever	1
5	537888	Spring arm return set	1
6	111941	Aluminium arbor retrofit kit	1
7	519971	120V/230V electric cardboard	1
8	295387A	230V switch	1
9	108468	Vise screws and plate kit	1
10	111014	Cover and holding plate kit	1
11	554650	Equipment kit	1



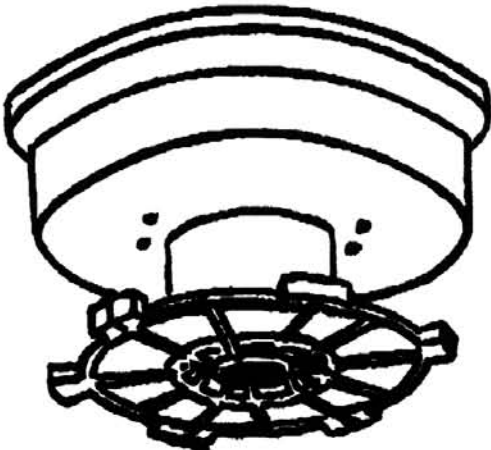








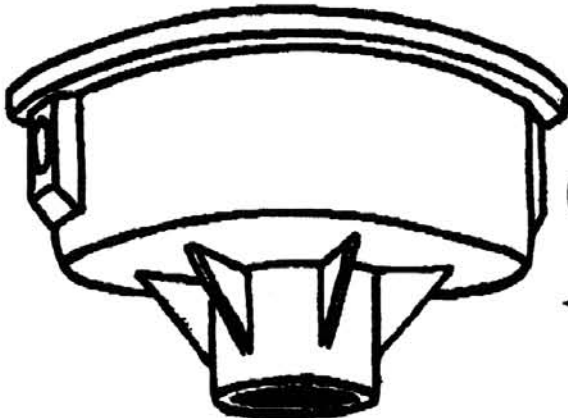
← **KNOB**
295294



SPOOL →
295291



SPRING →
295293

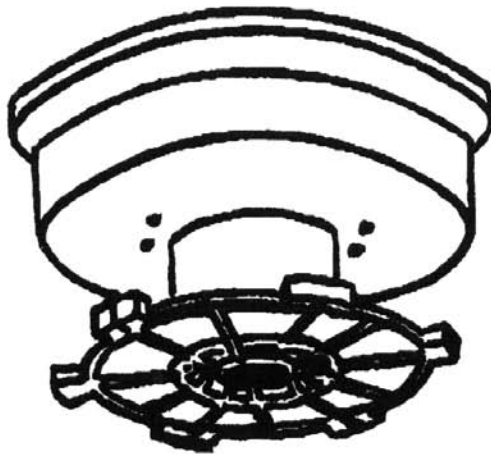


EYELET → 
295292

← **BODY**
295296



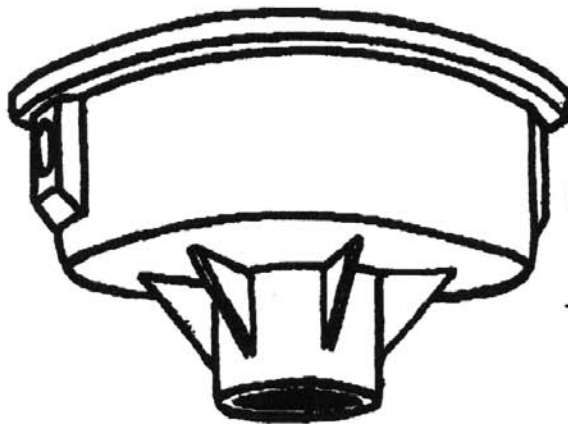
KNOB
295294



SPOOL
295291



SPRING
295293



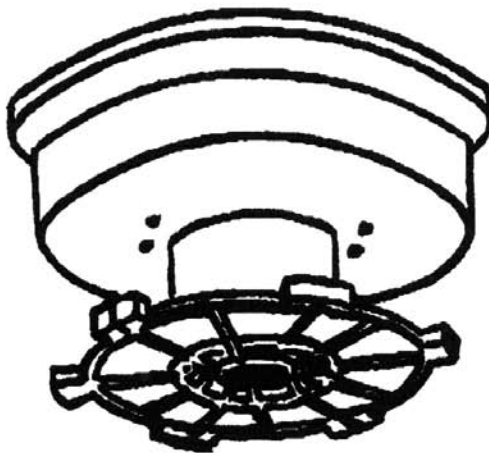
EYELET
295292



BODY
295297



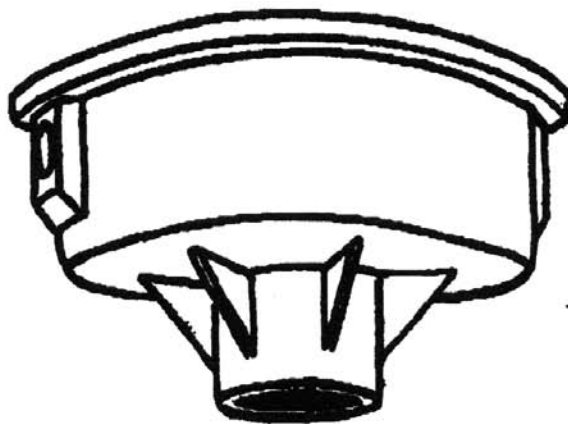
KNOB
295295



SPOOL
295291



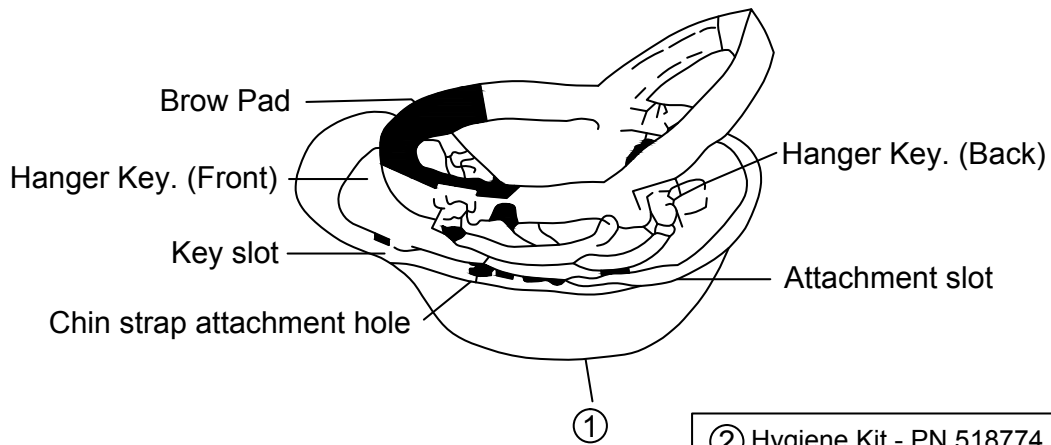
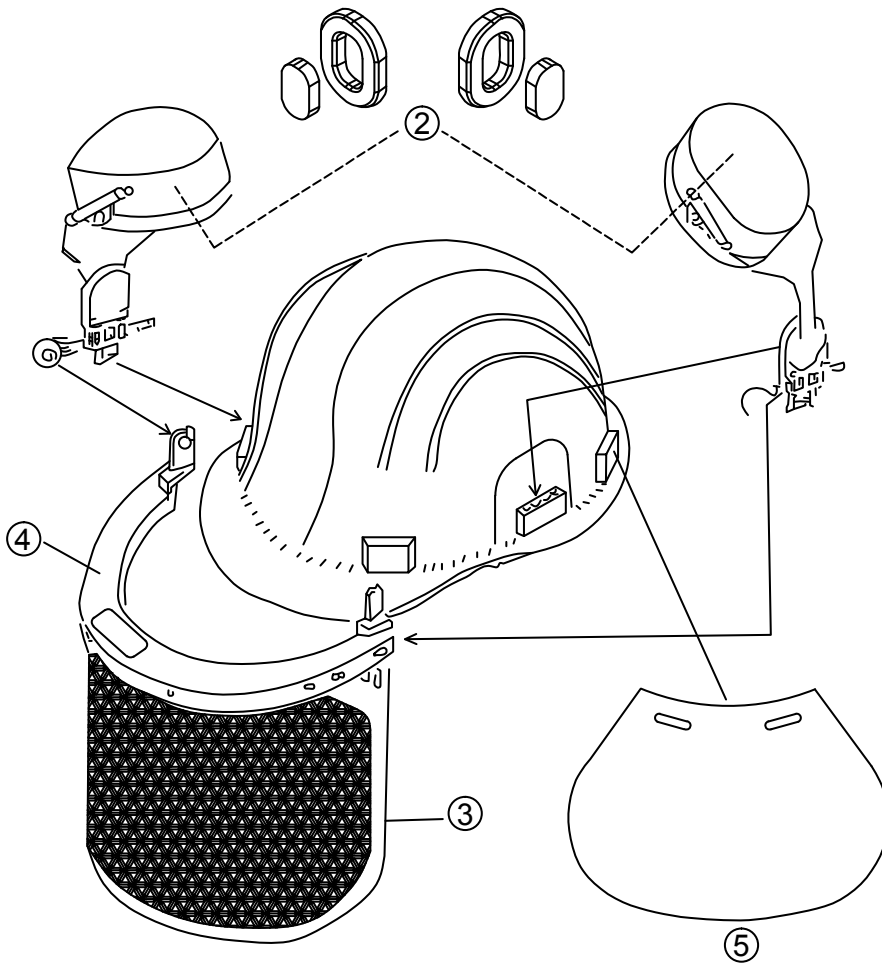
SPRING
295293



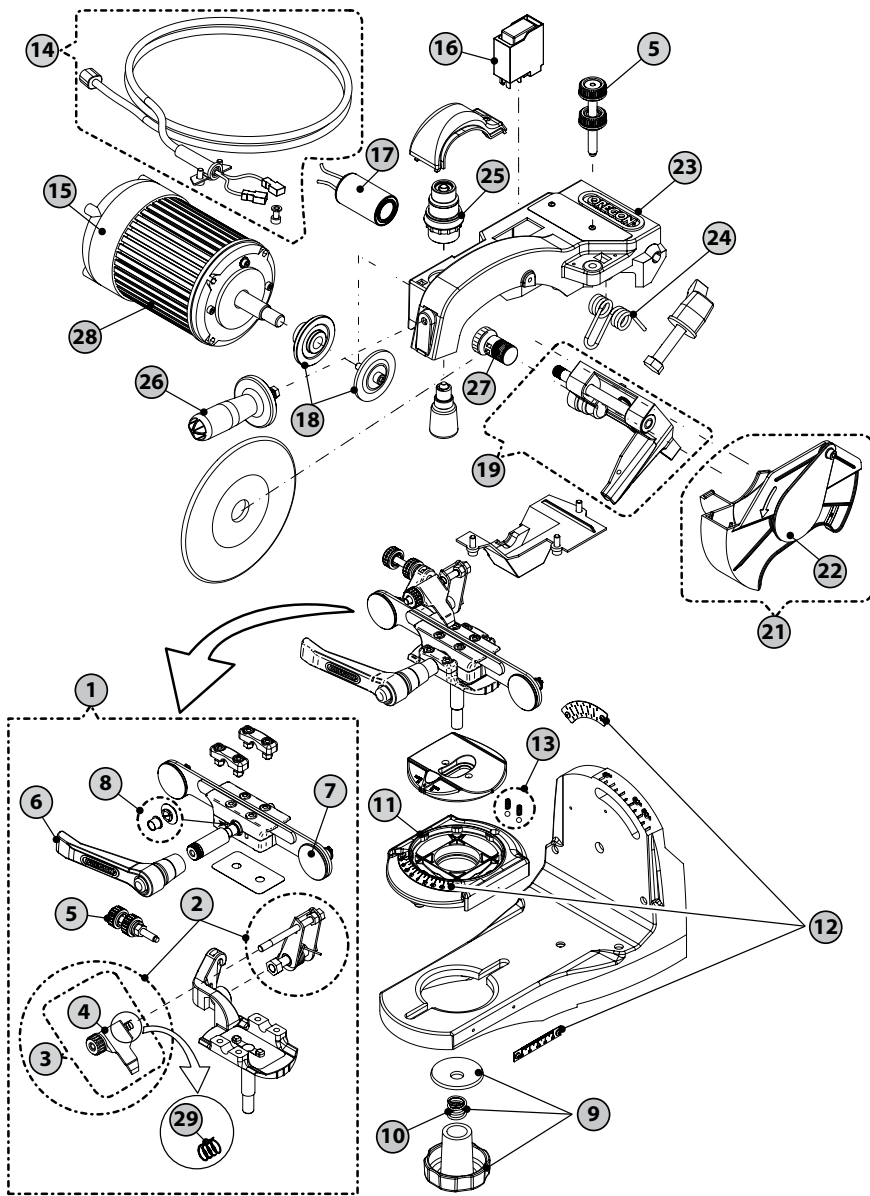
EYELET
295292

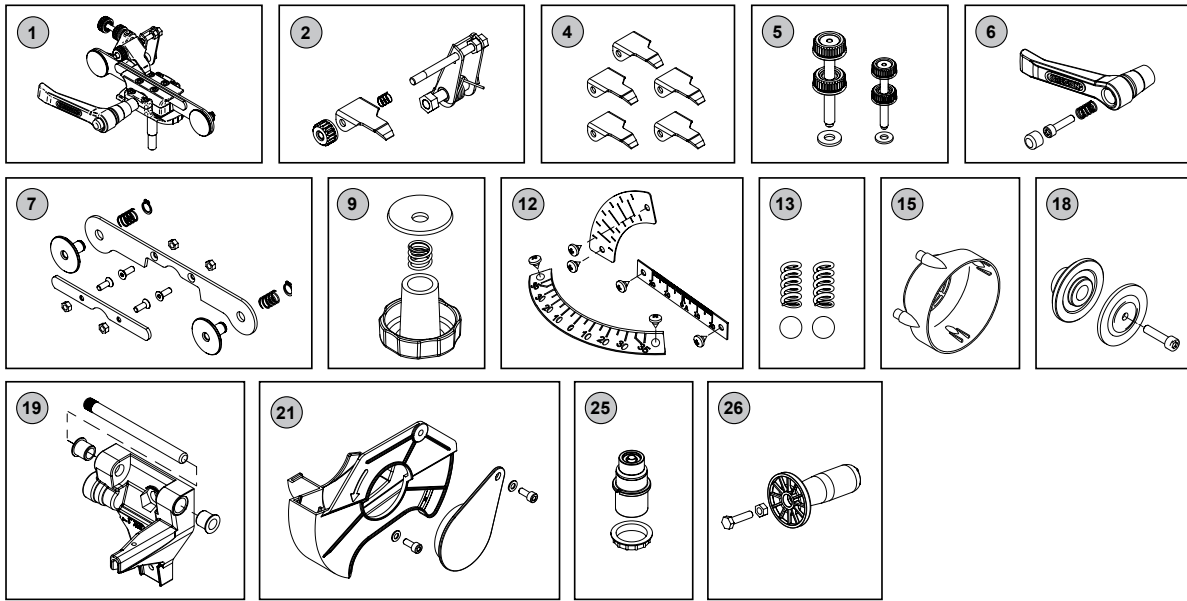


BODY
295298

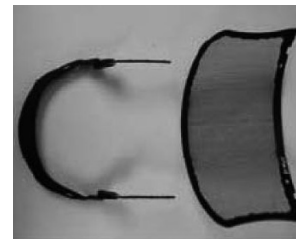


- ② Hygiene Kit - PN 518774
- ③ Face Shield - PN 523599
- ④ Holder Bracket - PN 523600
- ⑤ Neck Cape - PN 518772
(This neck cape is an optional device,
which is not included with PN 517760)





Ref.	P/N	Description	Qty per bag
1	526265	Complete vise assembly	1
2	537411	Chain hold kit 511AX	1
3	522688	Chain stop, 511AX vise assy	1
4	32677	Chain stop (5 pk)	5
5	537412	Adjustment knobs, kit	1
6	522689	Lever, 511AX vise assy chain locking	1
7	526267	Vise jaws, 511AX vise assy	1
8	522691	Vise bushing, 511AX vise assy	1
9	537413	Vise locking kit	1
10	35590	Spring	1
11	522685	Sliding support 511AX	1
12	537410	511Ax scales kit	1
13	32678	Spring and ball kit	1
14	295389A	Cable kit complete with plug	1
15	37947	End motor cap	1
16	295387A	Switch 230V	1
17	295386A	Capacitor 230V	1
18	537409	Motor flange kit (outer and inner)	1
19	522649	Bracket, 511AX arm support	1
21	522692	Shield wheel protector	1
22	105654	Shield kit	1
23	522650	Arm, 511AX complete	1
24	522651	Spring, 511AX arm return	1
25	108505	Light socket E14 w/wires - 230V	1
26	105538	Handle kit	1
27	522670	Safety pin, 511AX	1
28	295388A	E-motor 230V	1
29	32681	Pawl center spring kit (5 pk)	5

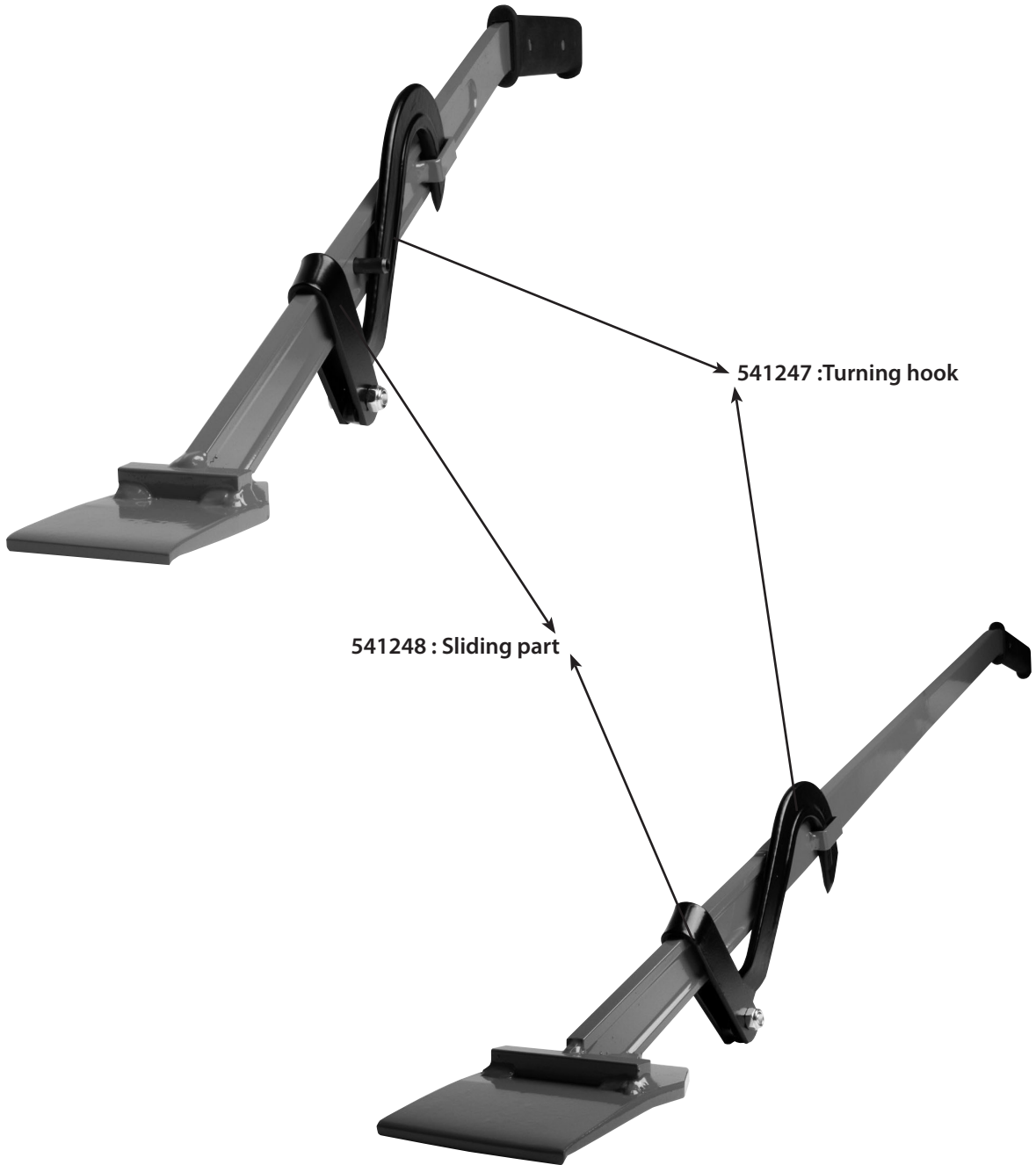
**1****2****3****4****5****6****7**

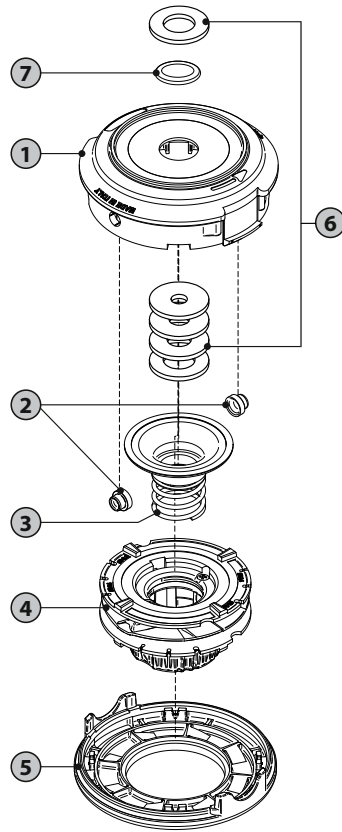
Ref.	P/N	Description
1	533213	Neck cape
2	536600	Repleacable earmuffs
3	536598	Ear muffs adapters
4	535849	Hygiene Kit for earmuffs
5	295392S	Harness
6	535846	Sweatband
7	295385S	Visor and peak



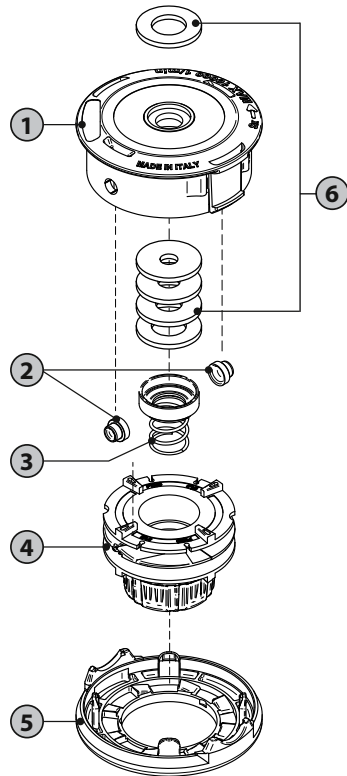
P/N 536304

P/N 536305

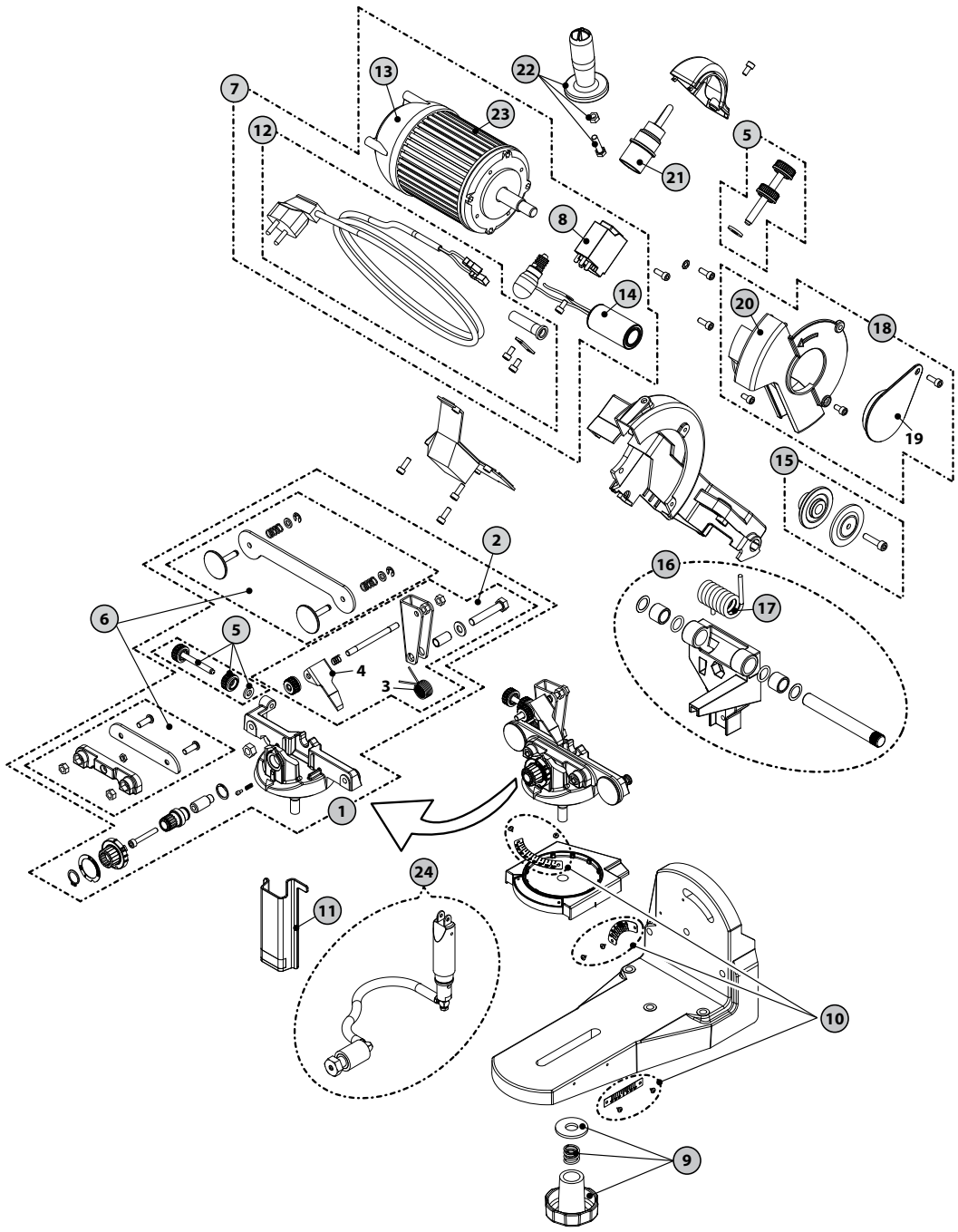




Ref.	P/N	Description	Qty per bag
1	544357	Body Kit	1
2	544353	Eyelet kit	2
3	544360	Spring kit	1
4	544358	Spool kit	1
5	544359	Cover kit	1
6	111165	Washers kit	1
7	544361	Spacer kit	1



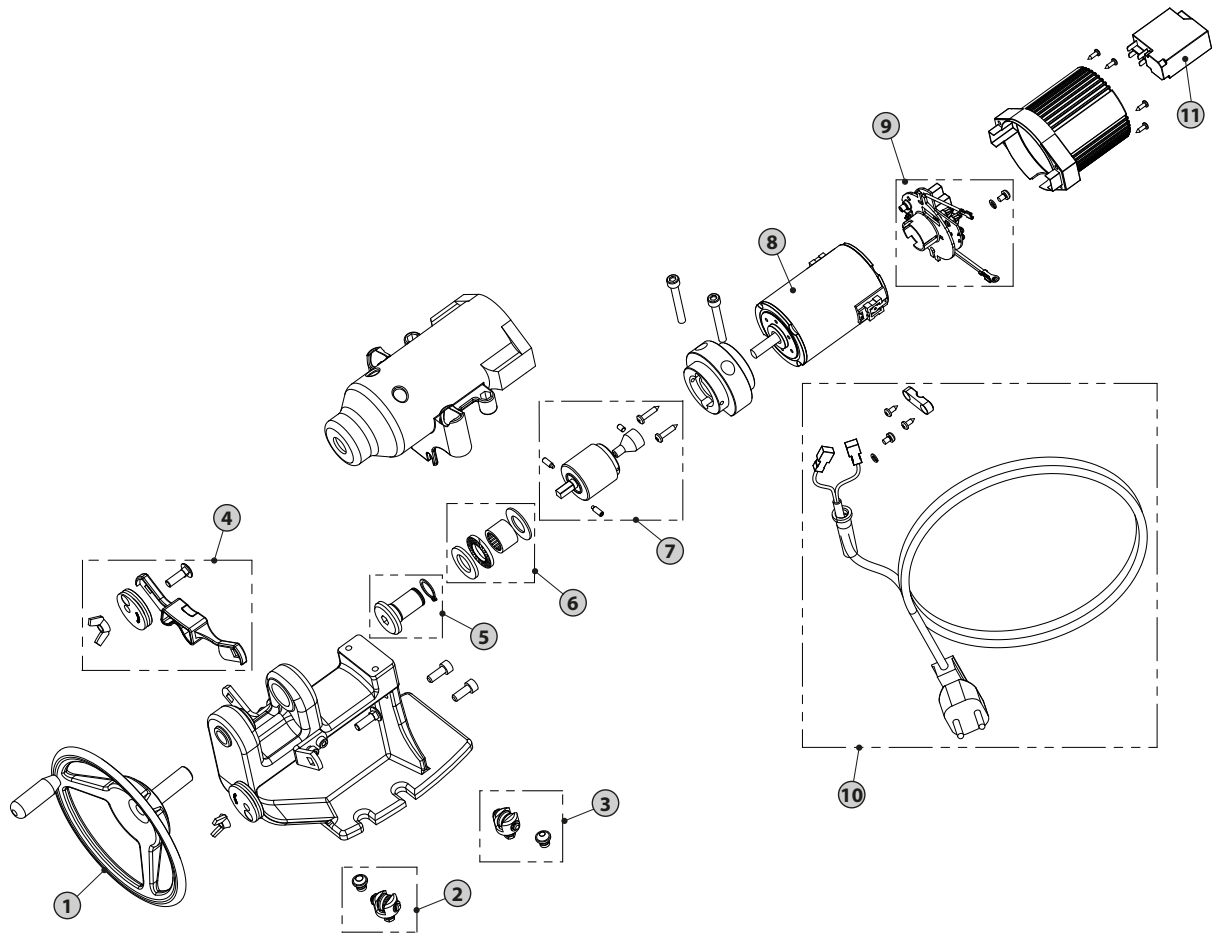
Ref.	P/N	Description	Qty per bag
1	544352	Body Kit	1
2	544353	Eyelet kit	2
3	544354	Spring kit	1
4	544355	Spool kit	1
5	544356	Cover kit	1
6	111165	Washers kit	1





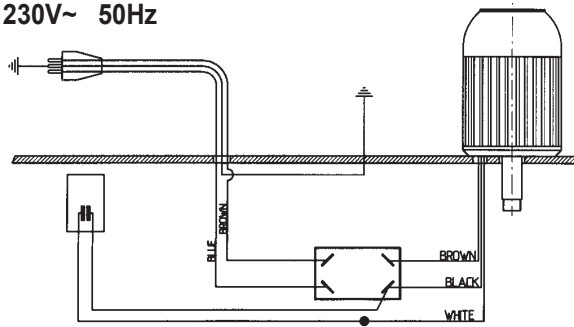
P/N 542654

Ref.	P/N	Description	Qty per bag
1	546949	Vise support	1
2	546945	Vise adjust. Spring	1
3	35606	Chain stop spring	1
4	546948	Longer pawl	1
5	537412	Adjustment knobs, kit	1
6	546947	Complete vise kit	1
7	546962	Complete electrical a.bly 230V	1
8	295387A	Switch 230V	1
9	537413	Vise locking kit	1
10	537410	Scales kit	1
11	546952	Cylinder protection	1
12	295389A	Cable kit complete with plug - 230V	1
	111035	Cable kit complete with plug - 230V - AUS	1
13	37947	End motor cap	1
14	295386A	Capacitor 230V	1
15	537409	Motor flange kit (outer and inner)	1
16	546951	Arm support assembly	1
17	546946	Head return spring	1
18	554651	Shield wheel protector	1
19	105654	Shield kit	1
20	109248	Metal shield	1
21	108505	Light socket E14 w/wires - 230V	1
22	105538	Handle kit	1
23	295388A	E-motor 230V	1
24	546950	Complete hydraulic a.bly	1

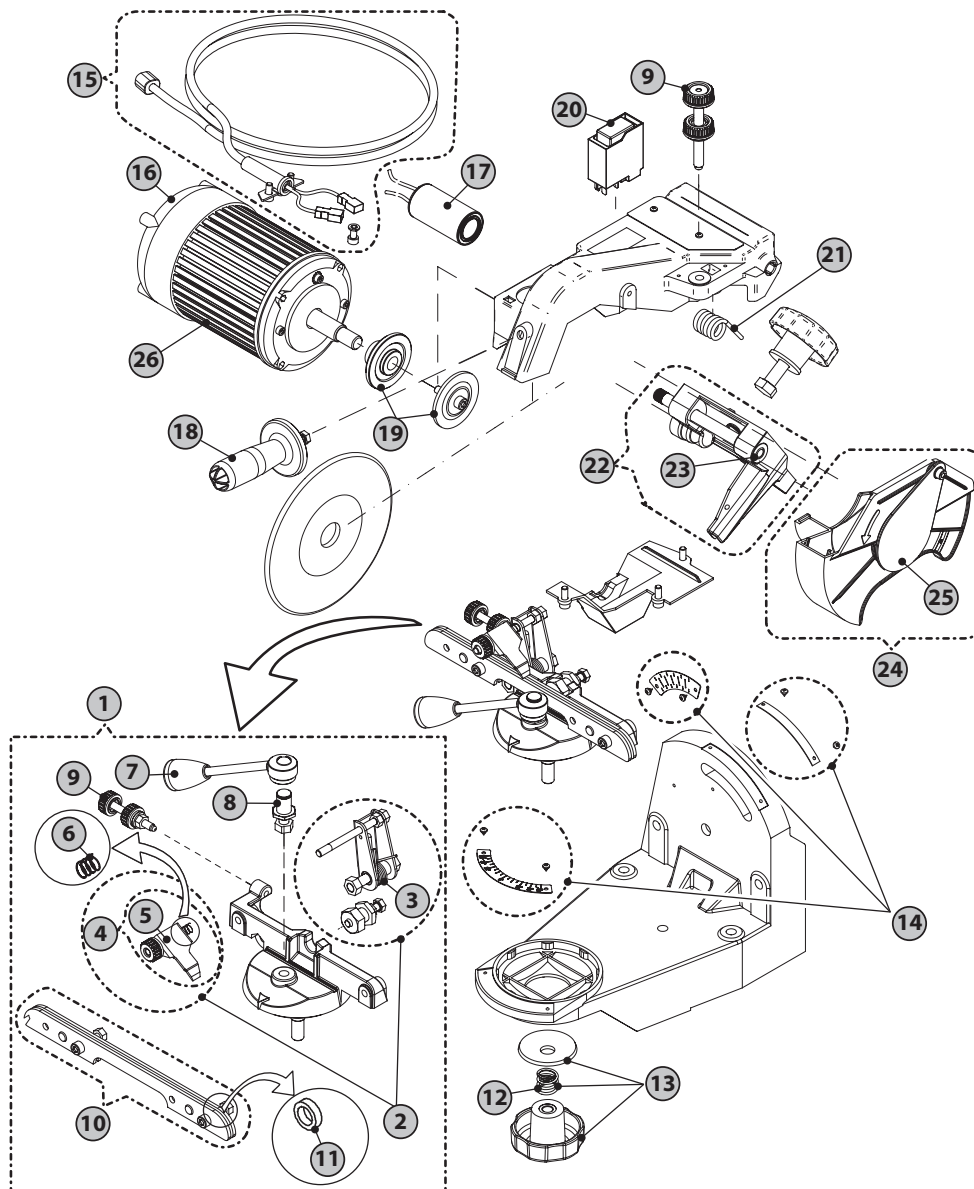


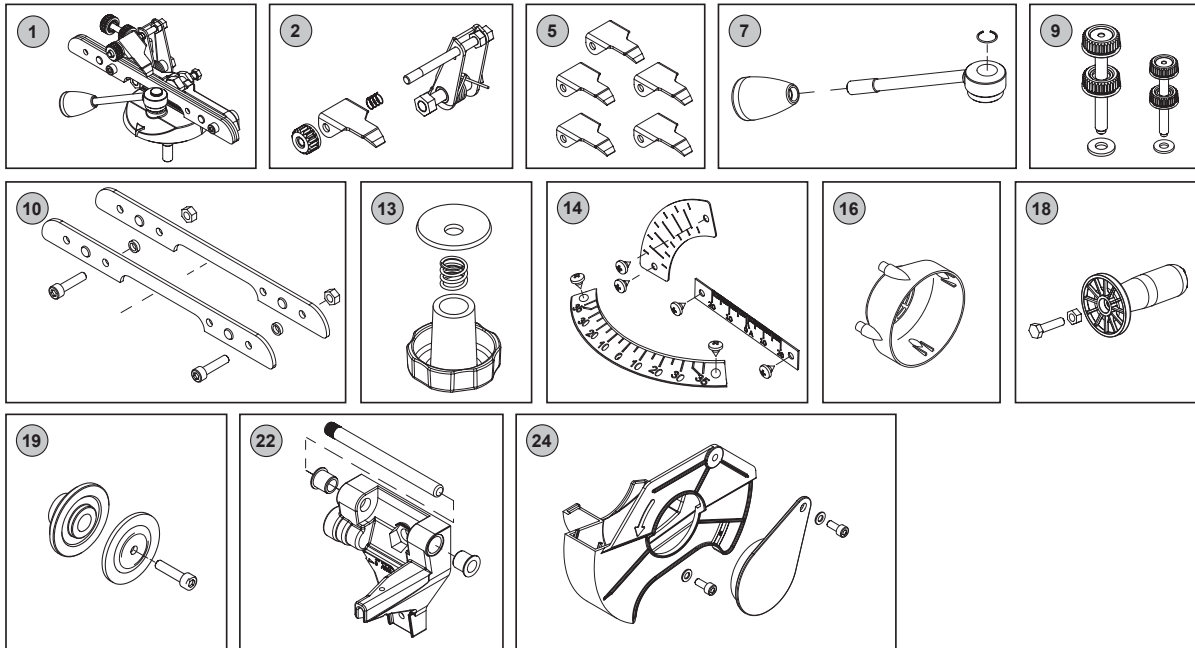
Ref.	P/N	Description	Qty per bag
1	545727	Handle wheel	1
2	545725	Kit spinnroll insert (1/4" - .325")	1
3	545724	Kit spinnroll insert (3/8" - .404")	1
4	545726	Chain guide unit	1
5	545722	Bush kit	1
6	545723	Bearing kit	1
7	545721	Planetary gear kit	1
8	545607	E-motor 230V	1
9	545606	120V/230V electric cardboard	1
10	545719	E-Cable kit 230V	1
11	295387A	230V switch	1

230V~ 50Hz

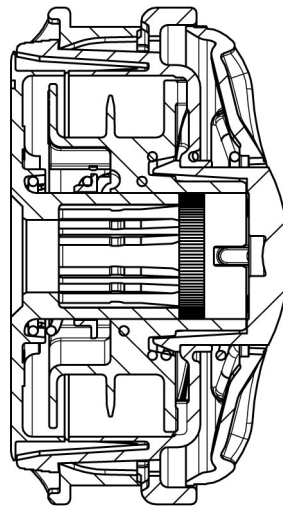
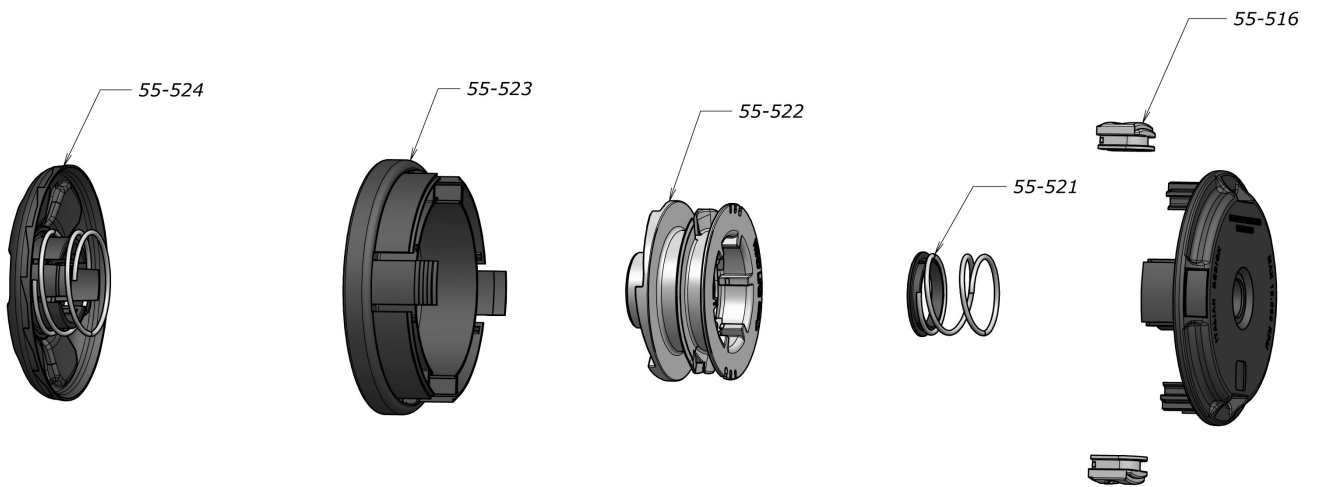


557271 Spare Parts

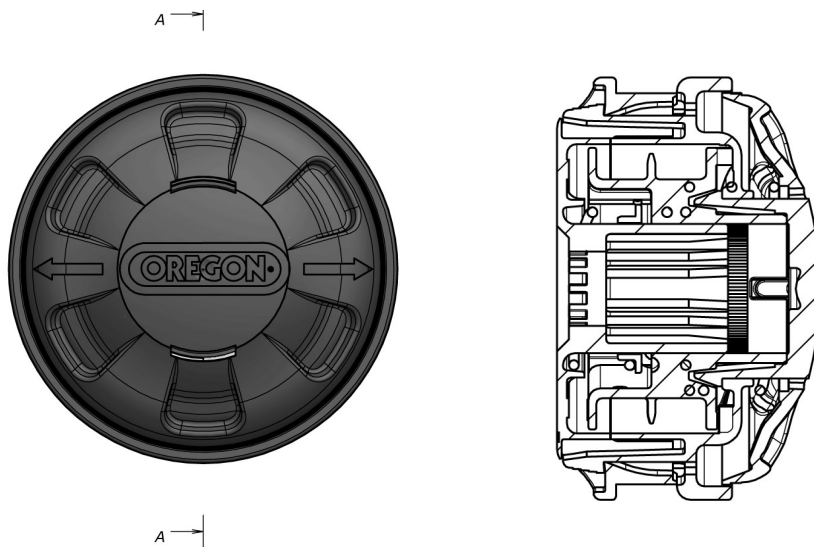
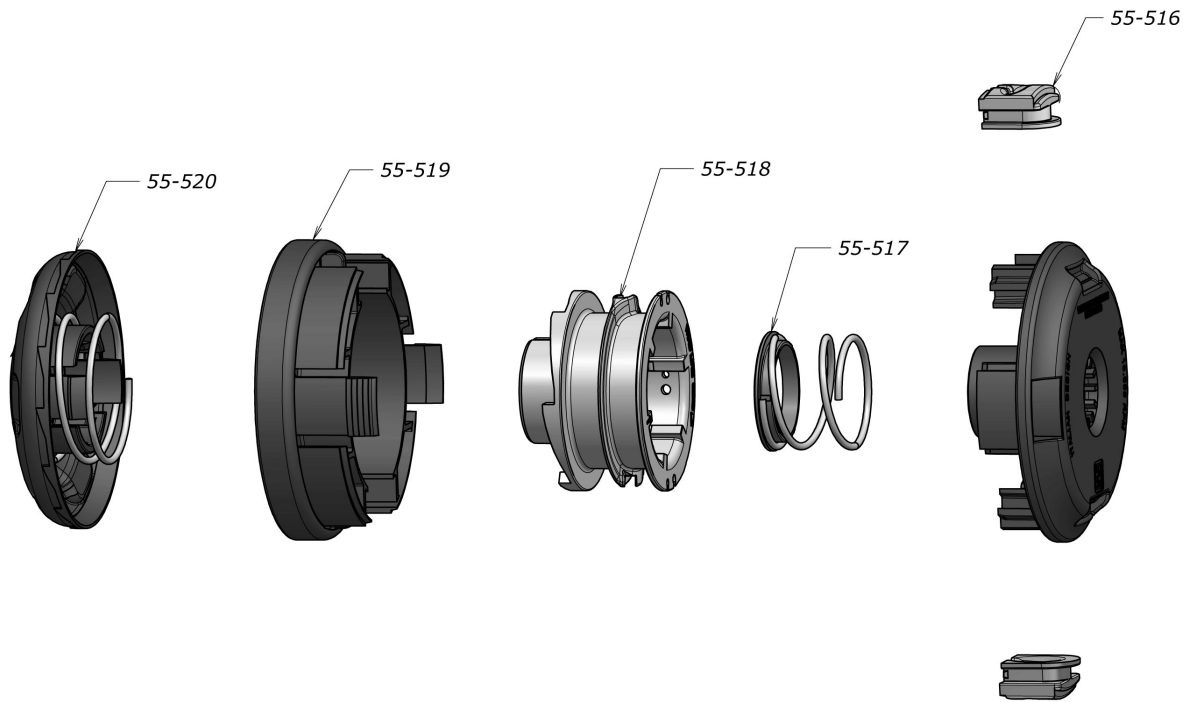




Ref.	P/N	Description	Qty per bag
1	534477	vise assembly	1
2	537411	Chain hold kit 511AX	1
3	35606	chain stop spring	1
4	522688	chain stop, 511AX vise assy	1
5	32677	chain stop (5-pk)	5
6	32681	pawl center spring KIT (5-pk)	5
7	534550	vise handle	1
8	37951	cam post	1
9	537412	adjustment knobs, kit	1
10	534549	vise jaws	1
11	35610	chain vise spacers	1
12	35590	spring	1
13	537413	vise locking kit	1
14	537410	511AX Scales Kit	1
15	12W1018	cable kit complete with plug	1
16	37947	end motor cap	1
17	295386A	Capacitor 230V	1
18	105538	handle kit	1
19	537409	motor flange kit (outer and inner)	1
20	295387A	Switch 230V	1
21	35589	spring	1
22	522649	bracket, 511AX arm support	1
24	522692	shield wheel protector	1
25	105654	shield kit	1
26	295388A	E-Motor 230V	1



P/N	Description	Qty
55-524	Bump knob+spring kit	1
55-523	Carrier kit	1
55-522	Spool kit	1
55-521	Spring kit	10
55-516	Eyelet kit	10



P/N	Description	Qty
55-520	Bump knob+spring kit	1
55-519	Carrier kit	1
55-518	Spool kit	1
55-517	Spring kit	10
55-516	Eyelet kit	10