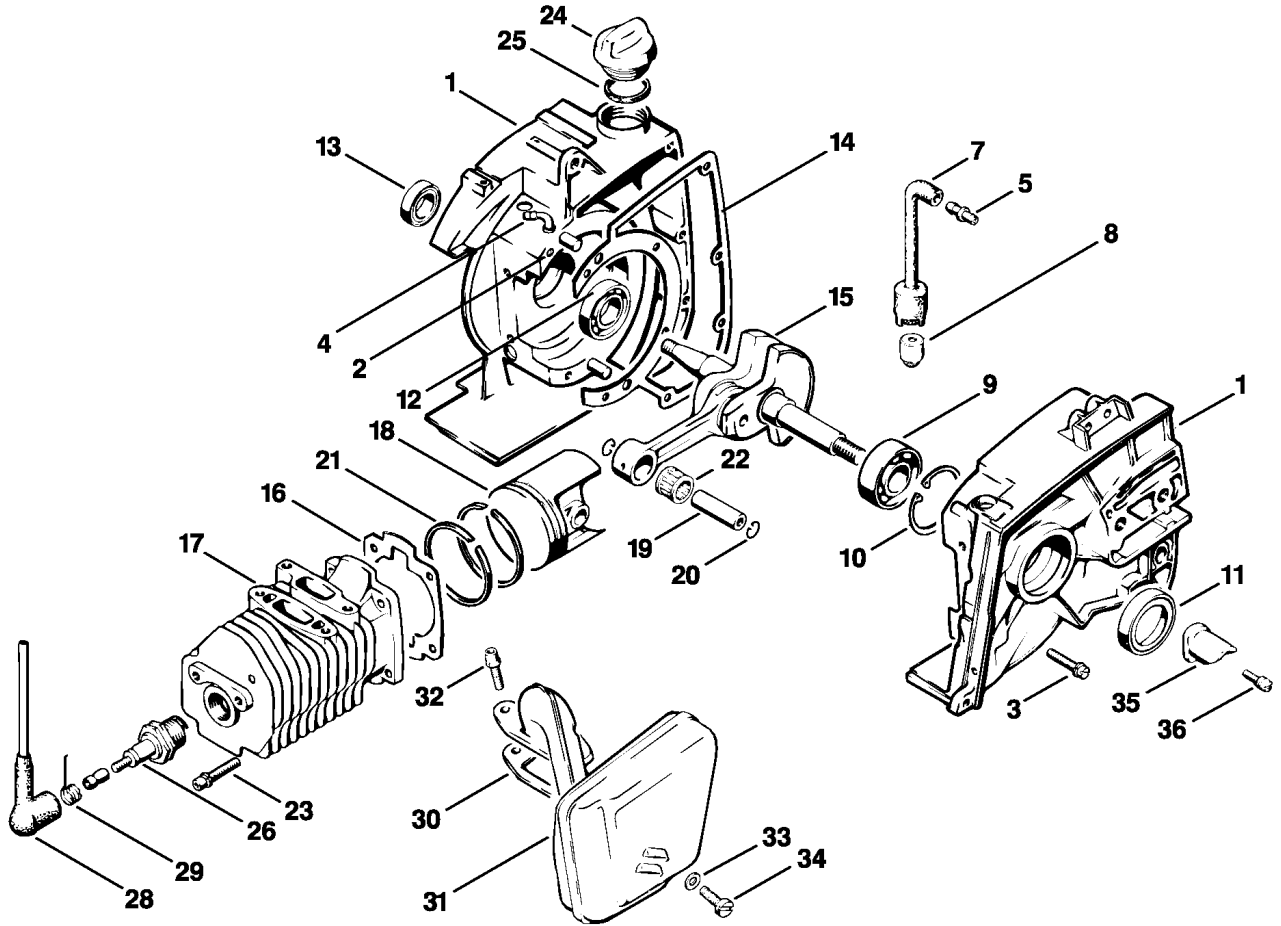


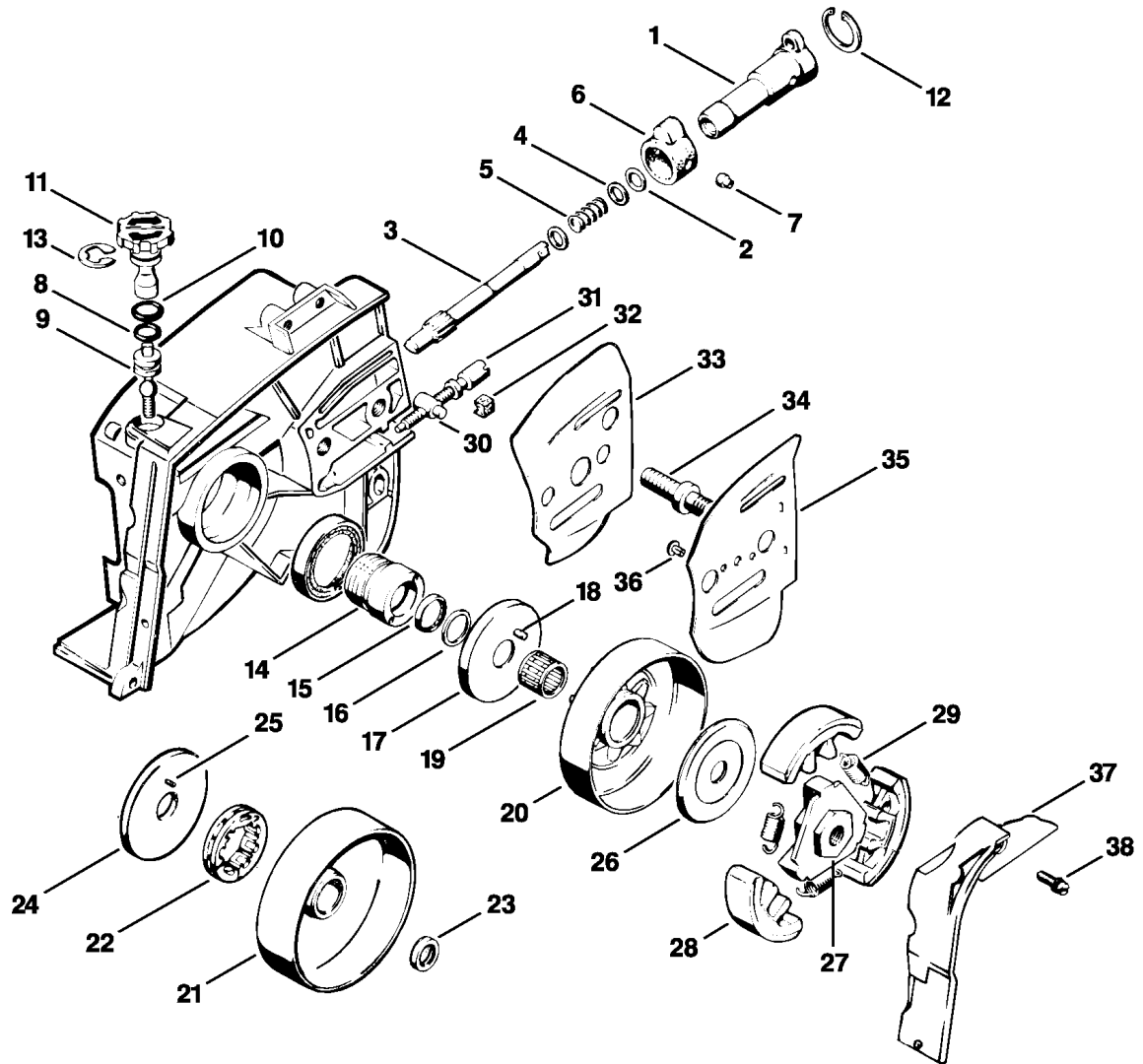
159ET001 LÄ

Reference	Item number	Qty	Description
1	1110 020 2104	1	Crankcase □ 2 - 5, 9,12
2	9371 470 3120	2	Cylindrical pin 6x20
3	9048 216 1010	8	Pan head screw M5x18
4	1110 122 3900	1	Elbow connector
5	0000 988 5202	1	Connector
7	1110 647 9400	1	Hose
8	1106 640 3801	1	Pickup body
9	9503 003 0340	1	Grooved ball bearing 6202
10	9456 621 3860	1	Circlip 35x1.5
11	9629 003 2860	1	Oil seal 25x37x7
12	9503 003 0310	1	Grooved ball bearing 6002
13	9640 003 1570	1	Oil seal 15x24x7
14	1110 029 0501	1	Gasket
15	1110 030 0401	1	Crankshaft
15 *	1110 030 0400	1	Crankshaft
16	1110 029 2300	1	Cylinder gasket
17	1110 020 1210	1	Cylinder with piston Ø 44 mm □ 18 - 21
18	1110 030 2000	1	Piston Ø 44 mm □ 19 - 21
19	1110 034 1500	1	Piston pin 10x6x32
20	9462 650 1000	2	Snap ring 10



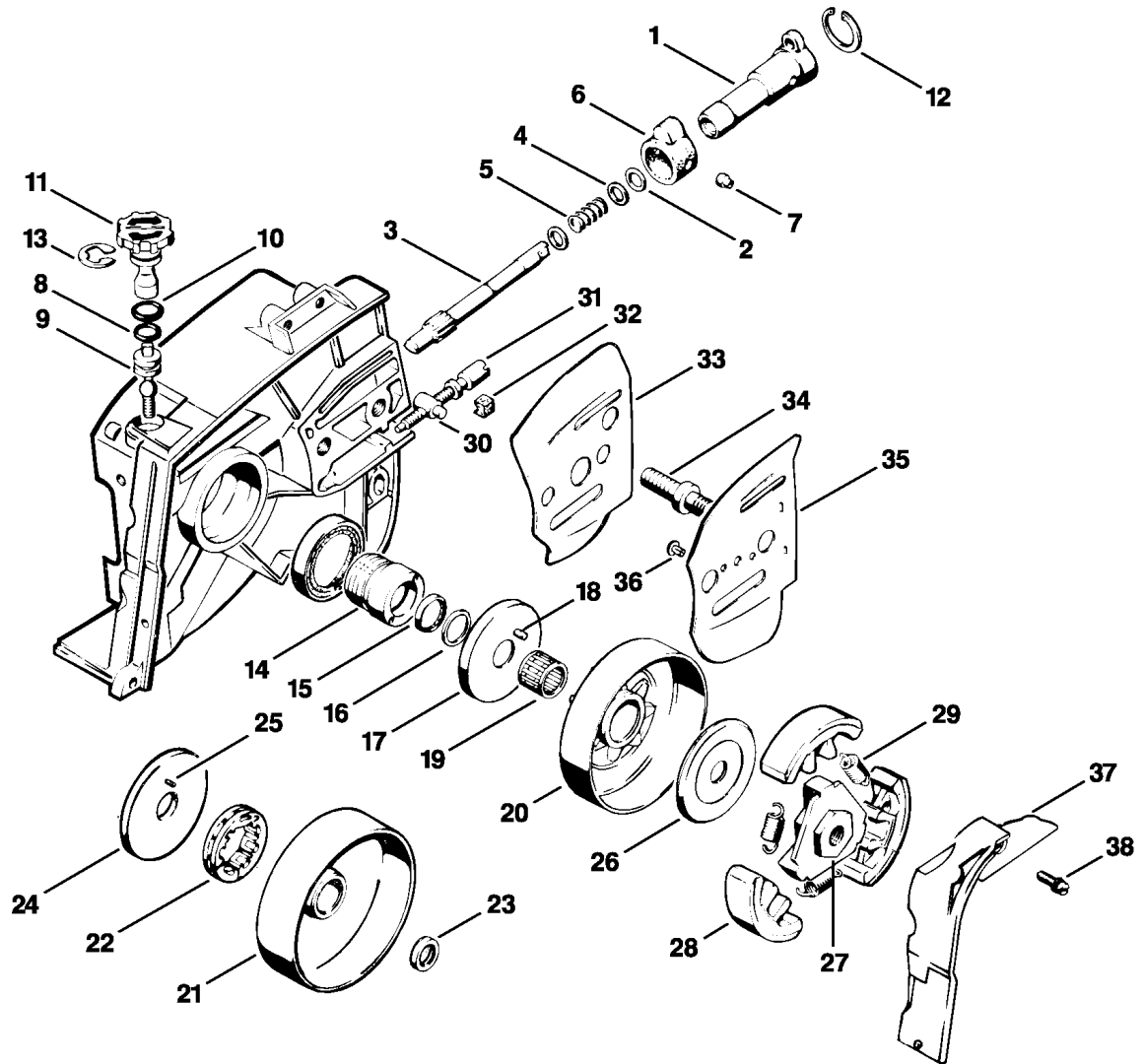
159ET001 LÄ

Reference	Item number	Qty	Description
21	1110 034 3000	2	Piston ring Ø 44x1.5 mm
22	9512 003 2340	1	Needle cage 10x14x13
23	9036 341 1010	4	Socket head screw M5x18
24	1114 640 3600	1	Oil filler cap □ 25
25	0000 992 6305	1	Sealing ring
26	1110 400 7005	1	Spark plug Bosch WSR 6 F
26	0000 400 7000	1	Spark plug NGK BPMR7A
28	1106 405 1000	1	Spark plug boot
29	0000 998 0603	1	Torsion spring
30	1110 149 0600	1	Muffler gasket
31	1110 140 0601	1	Muffler
	1110 140 0615	1	Muffler USA, AUS, CDN
32	9036 341 0980	2	Socket head screw M5x16
33	9291 021 0120	1	Washer 5.3
34	9048 216 1010	1	Pan head screw M5x18
35	1114 656 7700	1	Chain catcher
36	9021 319 0670	1	Pan head screw M4x14



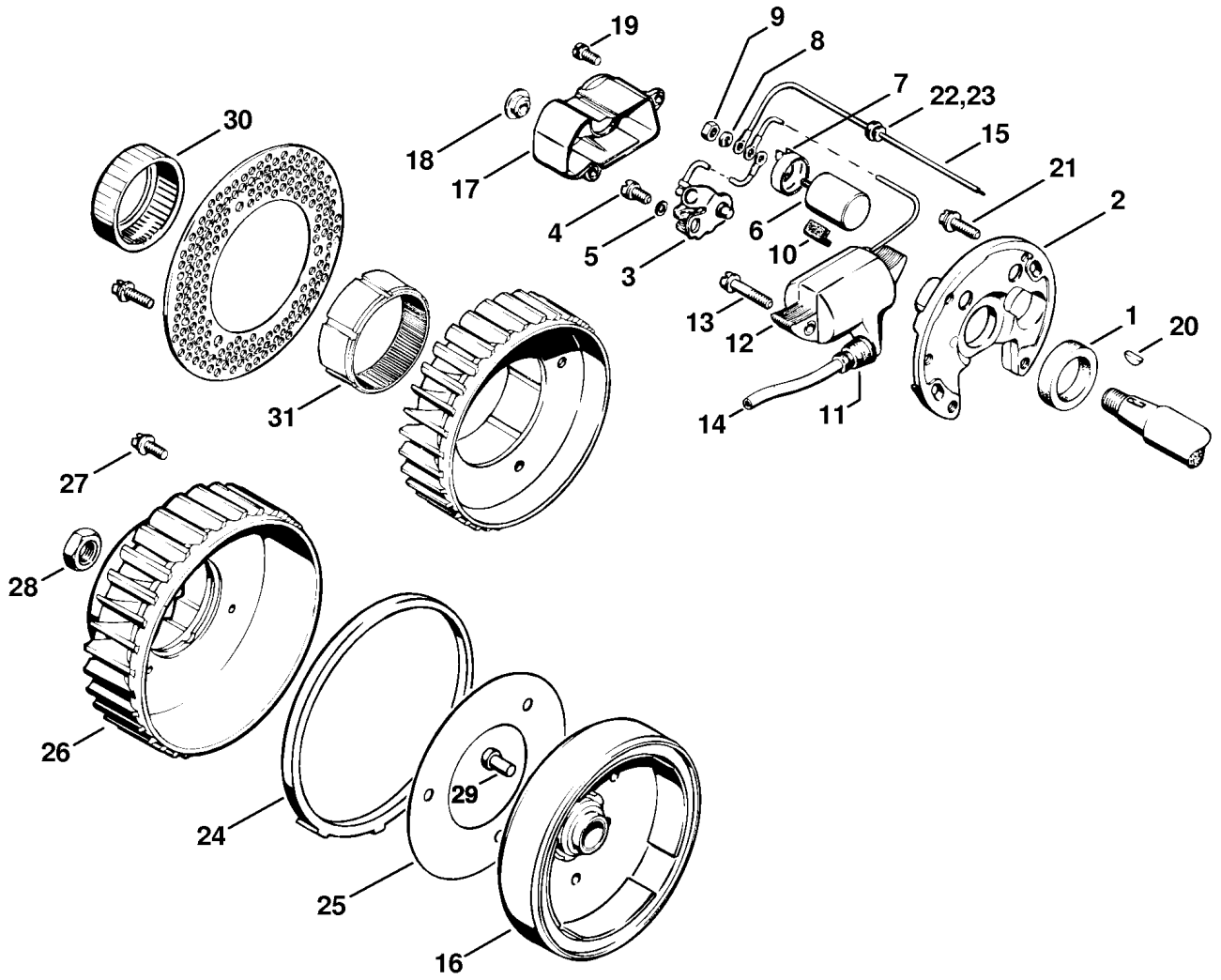
159ET002 LÄ

Reference	Item number	Qty	Description
	1110 640 3200	1	Oil pump □ 1 - 7
1	1110 640 3000	1	Pump housing
2	9646 945 0340	1	O-ring 6x1.5
3	1110 647 0601	1	Pump piston
4	0000 958 0602	2	Washer
5	0000 997 0805	1	Compression spring
6	1110 647 9000	1	Rubber ring
7	0000 963 0501	2	Bushing
8	9646 945 0490	1	O-ring 7x1.5
9	1110 647 4800	1	Control bolt
10	9646 945 0590	1	O-ring 8x2
11	1110 647 4900	1	Control knob
12	9456 621 2140	1	Circlip 20x1
13	9460 624 0800	1	E-clip 8
14	1110 640 7100	1	Worm □ 15, 16
15	9643 003 1160	1	Sealing ring 12x16x3
16	1110 647 9705	1	Ring
17	1110 030 7502	1	Cover washer □ 18
18	9371 651 1360	1	Cylindrical pin 2.5x11
19	9512 933 3000	1	Needle cage 12x15x13
20	1113 640 2000	1	Chain sprocket 3/8"



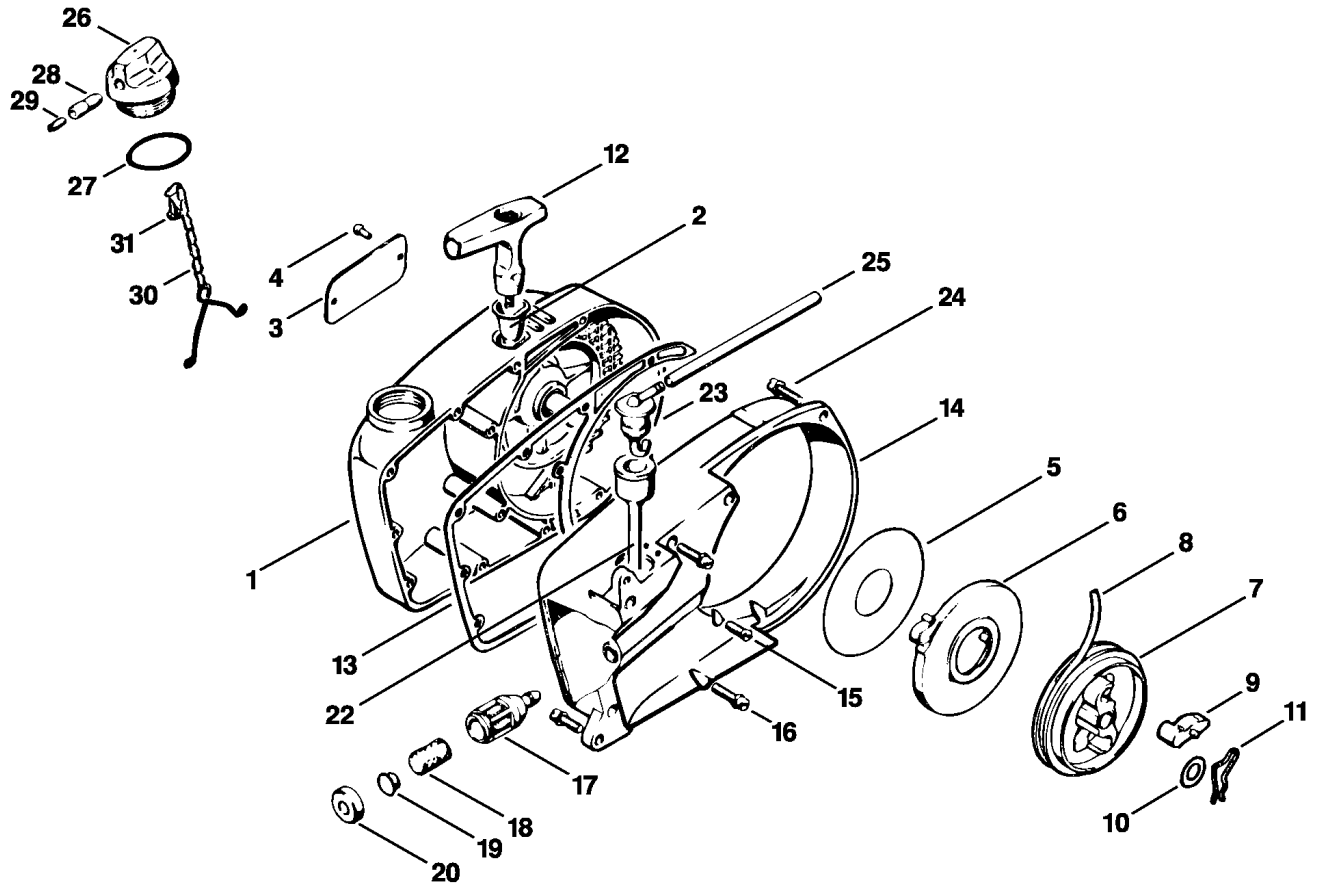
159ET002 LÄ

Reference	Item number	Qty	Description
	1110 007 1040	1	Rim sprocket kit 3/8" (B) □ 21 - 25
21		1	Clutch drum (D)
22	0000 642 1220	1	Rim sprocket 3/8" 7T
23	0000 961 1001	1	Ring
24	1110 030 7503	1	Cover washer □ 25
25	9371 651 1350	1	Cylindrical pin 2.5x10
26	1110 162 8900	1	Washer
	1113 160 2010	1	Clutch □ 27 - 29
27	1113 162 3205	1	Carrier
28	1113 162 0802	3	Clutch shoe
29	0000 997 5811	3	Tension spring
30	1110 664 1500	1	Tensioning nut
31	1110 664 1600	1	Adjusting screw
32	1110 021 9000	1	Clamp
33	1113 664 1001	1	Inner side plate
34	1110 664 2400	2	Collar screw
35	1113 664 1100	1	Outer side plate
36	9441 065 1910	2	Round head rivet 3x8
37	1110 656 1502	1	Guard plate
38	9044 319 0660	1	Pan head screw M4x12



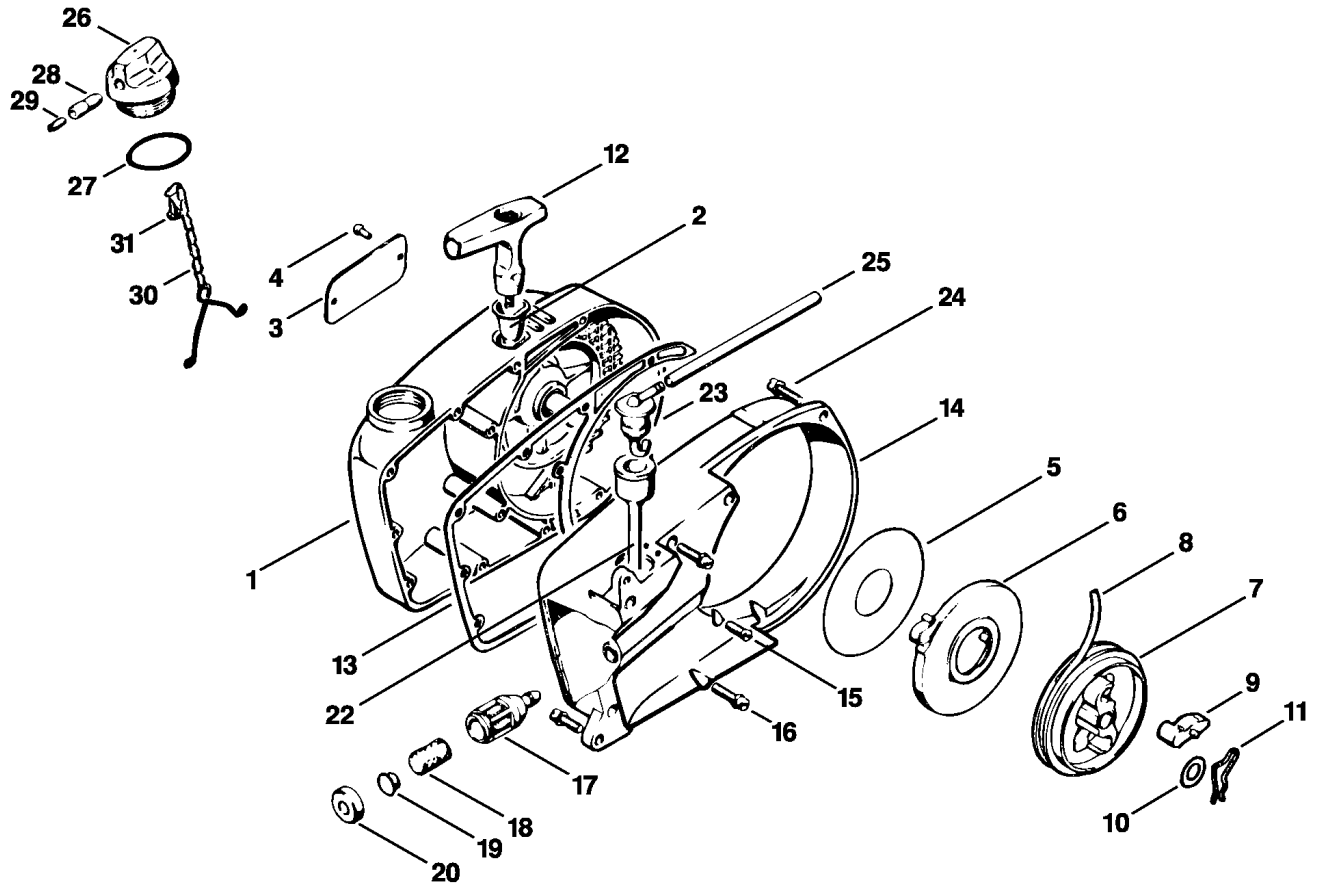
159ET000 GM

Reference	Item number	Qty	Description
1	0000 992 5740	1	Sealing ring
2	1110 400 0511	1	Magneto □ 3 - 18
3	1115 400 2000	1	Set of points
4	9041 216 0630	1	Pan head screw M4x8
5	9322 630 0100	1	Spring washer 4
6	1115 404 3400	1	Capacitor
7	1115 404 8800	1	Cap
8	9321 630 0080	1	Spring washer 3
9	9210 260 0400	1	Hexagon nut M3
10	1110 404 4200	1	Felt wick
11	0000 989 1010	1	Grommet
12	1115 404 3200	1	Ignition coil
13	9110 313 0700	2	Flat head screw M4x19
14		1	Ignition lead 295 mm
15	1110 440 1102	1	Short circuit wire
16	1110 400 1205	1	Flywheel
17	1115 400 8200	1	Dust cap □ 18
18	1110 145 9001	1	Plug
19	9047 319 0340	2	Pan head screw M3x8
20	9482 435 0030	1	Woodruff key 2x3.7
21	9021 319 0670	2	Pan head screw M4x14
22	0000 989 0804	1	Grommet
23	0000 989 0801	4	Grommet
24	1110 086 8902	1	Sealing ring
25	1110 089 0500	1	Gasket
26	1110 086 0505	1	Fanwheel
27	9044 319 0680	3	Pan head screw M4x16
28	9210 261 1140	1	Hexagon nut M8x1
29	0000 988 6008	3	Plug
30	* 0000 961 5115	1	Ring → 2 705 869 (03.1974)
31	* 0000 961 5116	1	Ring → 5 816 401 (27.1979)



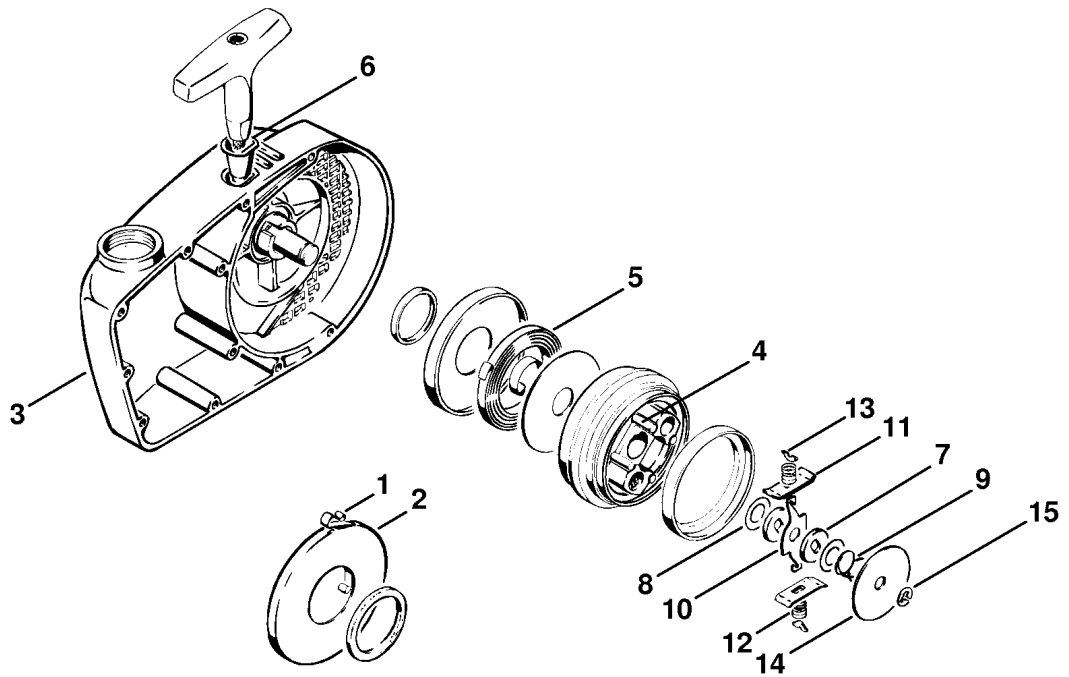
110ET010 LÄ

Reference	Item number	Qty	Description
	1110 080 2815	1	Fan cover with rewind starter □ 1 - 12
1	1110 080 2805	1	Fan cover □ 2 - 4
2	1110 084 9102	1	Bushing
3	0000 967 2020	1	Nameplate STIHL
4	9441 065 1270	2	Round head rivet 2.6x6
5	1106 195 9015	1	Washer
6	1117 190 0601	1	Rewind spring
7	1117 007 1014	1	Rope rotor kit □ 9
8	1107 195 8200	1	Starter rope Ø 4.5x1000 mm
9	1124 195 7200	1	Pawl
10	1118 162 8935	1	Washer
11	1117 195 3500	1	Spring
12	1121 195 3400	1	Starter grip
13	1110 359 0701	1	Gasket
14	1110 084 1000	1	Fan housing
15	9062 319 0660	2	Countersunk screw M4x12
16	9048 319 0660	9	Pan head screw M4x12
17	1115 350 3503	1	Pickup body □ 18 - 20



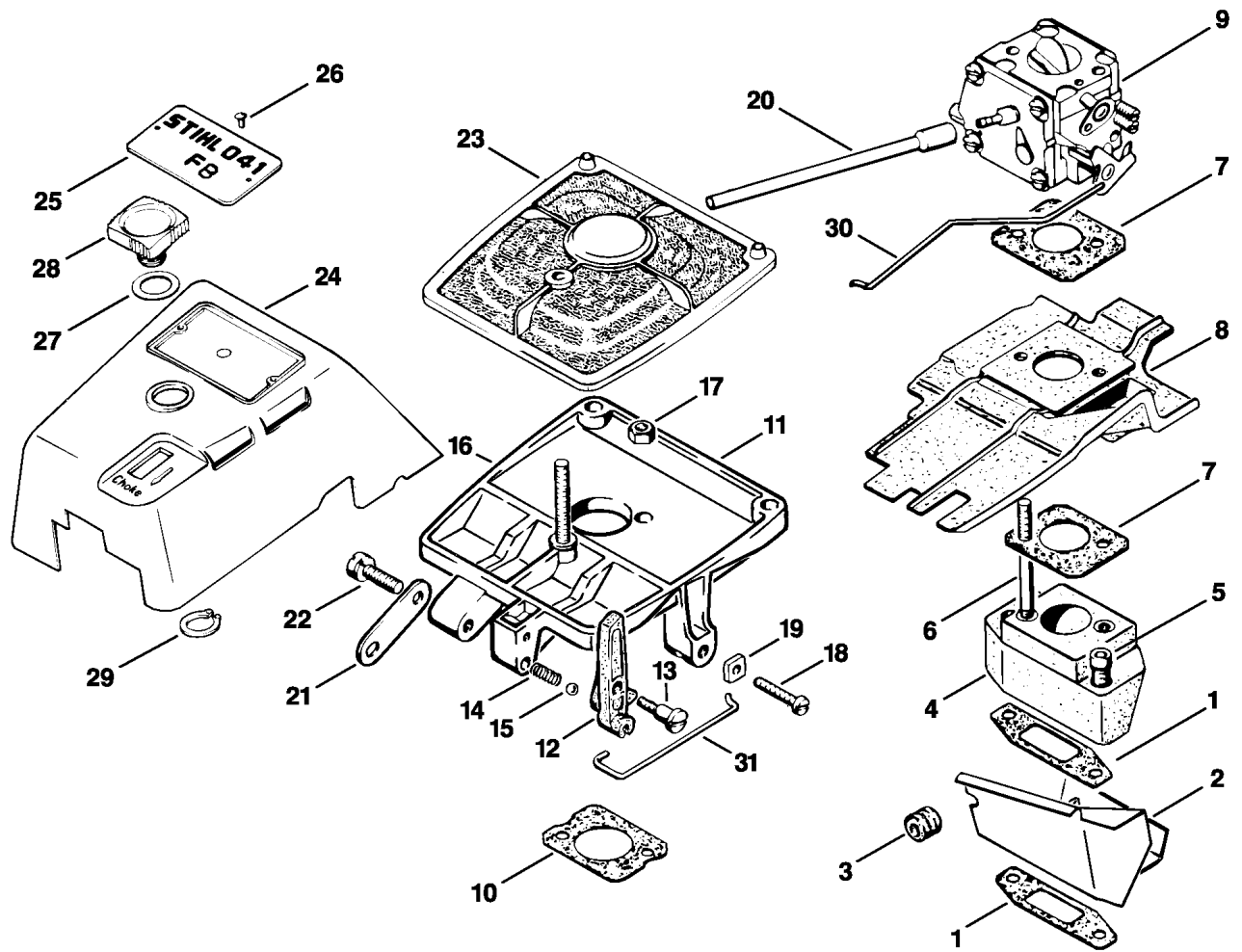
110ET010 LÄ

Reference	Item number	Qty	Description
18	1110 358 1800	1	Filter
19	1115 358 8200	1	Weight
20	1115 358 2500	1	Cap
22	1113 358 7700	1	Hose
23	1110 350 1200	1	Elbow connector
24	9048 216 1010	4	Pan head screw M5x18
25		1	Hose 3.1x5.7x135 mm (D)
	0000 930 2803	1	Hose 3.1x5.7 mm x 1 m (A,B)
26	1110 350 0501	1	Filler cap □ 27 - 31
27	9645 945 2820	1	O-ring 25x2.5
28	1110 353 8100	1	Insert
29	0000 951 5800	1	Grub screw
30	1117 350 0905	1	Filler cap retainer
31	9099 021 2360	1	Self-tapping screw 3.5x9.5



Reference		Item number	Qty	Description
1	*	1110 190 0600	1	Rewind spring → 2 663 618 (11.1968)
2	*	1110 195 0300	1	Spring housing → 2 663 618 (11.1968)
3	*	1110 080 2800	1	Fan cover
4	*	1106 195 9800	4	Notched pin
5	*	1111 195 1600	1	Rewind spring
6	*	1107 195 8200	1	Starter rope Ø 4.5x1000 mm
7	*	1106 195 9001	2	Washer
8	*	0000 958 1010	2	Washer
	*	1106 190 4600	1	Friction shoe
9	*	1106 195 2900	1	Brake spring
10	*	1106 195 3000	1	Brake lever
11	*	1106 195 5000	2	Friction shoe plate
12	*	1106 195 5100	2	Friction shoe spring
13	*	1106 195 1700	2	Spring retainer plate
14	*	1106 195 3200	1	Thrust washer
15	*	9460 624 0500	1	E-clip 5

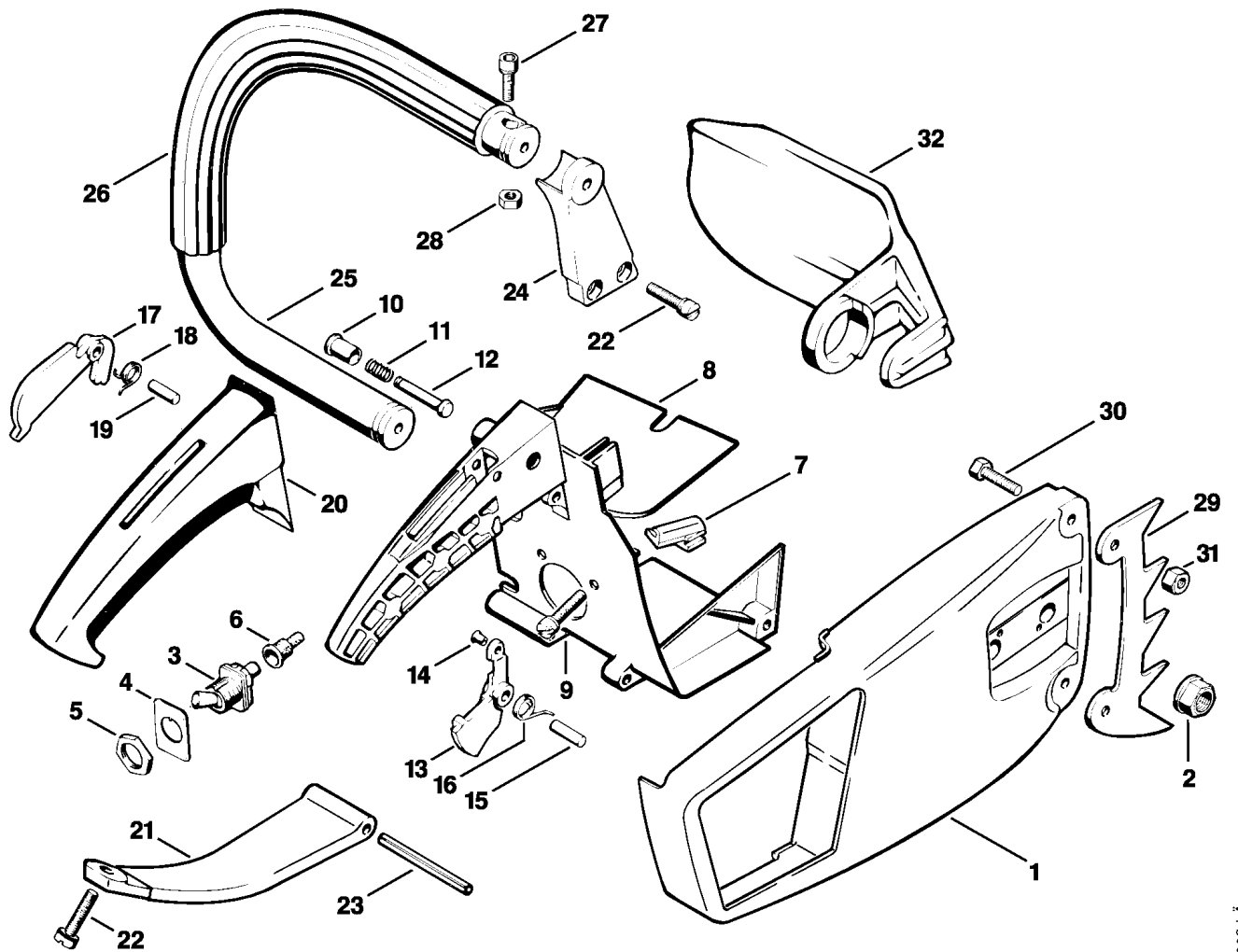
Reference	Item number	Qty	Description
1	1110 129 1401	2	Gasket
2	1110 146 7401	1	Deflecting plate
3	0000 989 0802	1	Grommet
4	1110 120 2201	1	Flange
5	9036 341 1070	2	Socket head screw M5x30
6	9123 319 0890	2	Stud M5x58
7	1111 129 1100	2	Gasket
8	1110 141 3000	1	Insulating plate
9	1110 120 0610	1	Carburetor HS-181C
10	1110 149 1200	1	Gasket
11	1110 140 2815	1	Filter housing □ 12 - 15
12	1111 185 2000	1	Choke lever
13	0000 951 2600	1	Oval head screw M4x10
14	0000 997 0326	1	Compression spring
15	9516 003 1720	1	Ball Ø 4 mm
16	4110 148 1000	1	Stud
17	9216 261 0700	2	Hexagon nut M5
18	1110 122 6201	1	Idle speed adjustment screw
19	1115 121 7700	1	Guide piece
20		1	Hose 3.1x5.7x120 mm (D)
	0000 930 2803	1	Hose 3.1x5.7 mm x 1 m (A,B)
21	1110 148 4000	1	Strap
22	9048 216 1010	1	Pan head screw M5x18
23	1110 120 1601	1	Air filter, flocked
24	1110 084 0604	1	Cover
25	0000 967 1568	1	Model plate 041 Farm Boss
26	0000 974 1000	2	Round head rivet 3x6



159ET006 LÄ

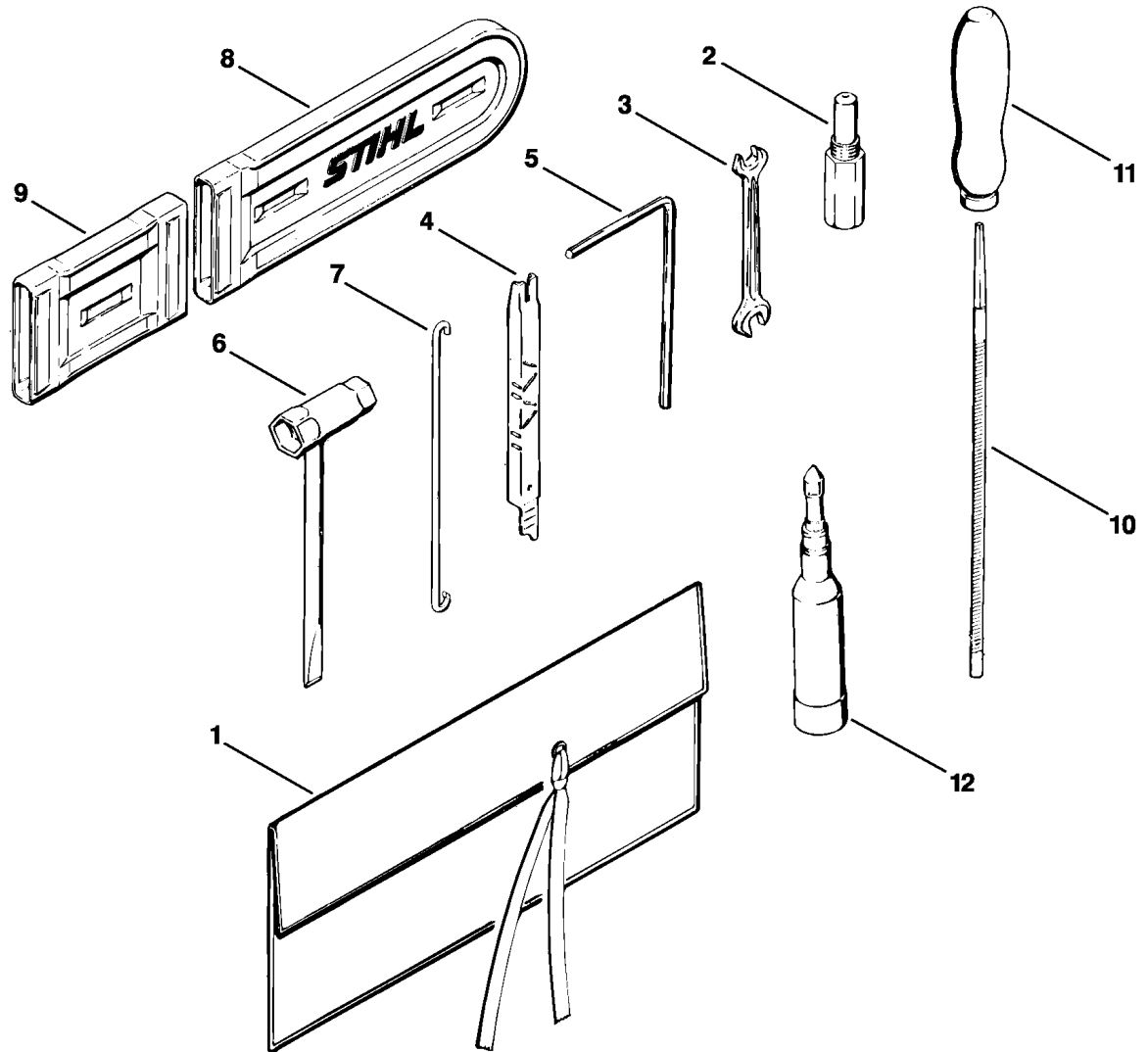
Reference	Item number	Qty	Description
27	0000 958 1705	1	Washer
28	1110 140 9500	1	Slotted nut
29	9455 621 1670	1	Circlip 16x1
30	1110 182 1505	1	Throttle rod
31	1110 185 1904	1	Choke rod

Reference	Item number	Qty	Description
	1110 120 0610	1	Carburetor HS-181C □ 1 - 30
1	1110 122 9410	1	Plug
2	1110 122 4200	1	Ball
3	1110 122 3000	1	Spring
4	1110 120 7200	1	Choke shaft with lever
5	1115 121 2900	1	Choke shutter
6	1110 129 0900	1	Gasket
7	1110 121 4700	1	Metering diaphragm
8	1110 121 0811	1	End cover
9	1106 122 7400	4	Round head screw
10	1110 121 4800	1	Pump diaphragm
11	1110 129 1110	1	Gasket
12	1110 121 0815	1	End cover
13	1110 122 7700	4	Oval head screw
14	1110 122 6800	1	Low speed adjustment screw
15	1110 122 3030	1	Spring
16	1124 121 5000	1	Inlet control lever
17	1110 121 9200	1	Spindle
18	1110 122 7800	1	Oval head screw
19	1110 121 5100	1	Inlet needle
20	4221 121 7800	1	Strainer
21	1110 122 3020	1	Spring
22	1110 122 6700	1	High speed adjustment screw
23	1106 122 3000	1	Spring
24	1110 121 5400	1	Valve jet
25	1110 120 7100	1	Throttle shaft with lever
26	1110 122 9005	1	E-clip
27	1110 122 7400	2	Round head screw
28	1110 122 3200	1	Torsion spring
29	1110 121 3300	1	Throttle shutter
30	1110 122 3900	1	Elbow connector



159ET008 LÄ

Reference	Item number	Qty	Description
1	1110 648 0410	1	Chain sprocket cover
2	0000 955 0801	2	Hexagon nut M8
3	1110 430 0202	1	Stop switch
4	0000 967 3506	1	Label
5	9211 260 1430	1	Hexagon nut M12x0.75
6	1110 432 9200	1	Grommet
7	0000 989 0502	1	Clamp
8	1110 080 1601	1	Shroud □ 10 - 19
9	9048 216 1010	4	Pan head screw M5x18
10	1111 182 9300	1	Starting throttle lock
11	0000 997 0603	1	Compression spring
12	1114 182 8901	1	Pin
13	1110 180 1501	1	Throttle trigger □ 14
14	9415 415 2240	1	Hollow rivet 3x0.3x5
15	9373 542 2610	1	Cylindrical pin 5x18
16	0000 998 1105	1	Torsion spring
17	1110 182 0800	1	Trigger interlock
18	0000 998 1001	1	Torsion spring
19	9373 470 2120	1	Cylindrical pin 4x18
20	1110 791 2203	1	Rubber grip
21	1110 791 7600	1	Support
22	9048 216 1010	1	Pan head screw M5x18
23	9380 620 2800	1	Roll pin 5x55
24	1110 791 1901	1	Handlebar support
25	1110 790 1501	1	Handlebar with hose 300 mm / 11 13/16"
26	0000 791 2004	1	Handle hose Ø 18 mm x 5 m / 3/4x197" (B)
27	9036 341 1020	2	Socket head screw M5x20
28	9214 320 0700	2	Lock nut M5
29	1110 664 0501	2	Bumper spike
30	9008 319 0960	4	Hexagon head screw M5x12
31	9214 320 0700	4	Lock nut M5
32	1113 792 9100	1	Hand guard
*	1108 180 1600	1	Starting throttle lock → 4 480 860
*	1110 180 1500	1	Throttle trigger → 4 480 860
*	1110 791 2200	1	Rubber grip → 6 066 141



Reference	Item number	Qty	Description
	1110 890 1410	1	Tool kit □ 1 - 7
1	0000 891 0800	1	Tool roll
2	1107 191 1201	1	Locking screw
3	0811 012 1152	1	Wrench 8x10
4	1110 893 4000	1	Filing gauge
5	0811 270 1080	1	Allen key 4x70x130
6	1119 890 3405	1	Combination wrench
7	1110 893 8800	1	Hook
8	0000 792 9111	1	Chain scabbard
9	0000 792 9132	1	Chain scabbard extension up to 63 cm
10	0811 411 8108	1	Round file Ø 5.5x200 mm (B)
11	0811 490 7860	1	File handle A100 (B)
12	1108 890 2500	1	Grease gun (B)
	1110 007 1050	1	Set of gaskets (A, B)
	1110 007 1060	1	Set of carburetor parts (A, B)
	0000 930 2207	1	Hose 3 m / 118" (A, B)
	0000 930 2201	1	Ignition lead 10 m (A, B)
	0000 930 2202	1	Ignition lead 10 m (A, B)
	0000 930 2200	1	Starter rope Ø 4.5 mm x 30.5 m (A, B)